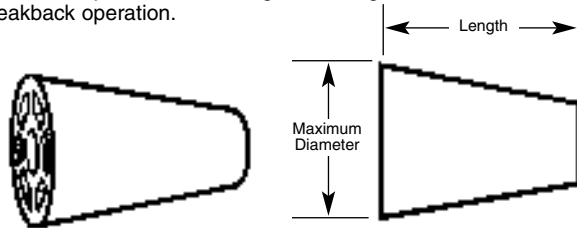


A-2 Plastic Cones

Dayton/Richmond A-2 Plastic Cones can be added to A-3, A-4 and A-44 Snap Ties and A-46 and A-48 Loop Ties. The cones act as internal spreaders, reduce grout leakage, and aid in the breakback operation.



A-2 Plastic Cones are recommended when specifications require a nominal 1", 1-1/4", 1-1/2" or greater breakback. Breakback is approximately 3/16" less than the cone length. Plastic cone sizes, other than those listed, are available on special order.

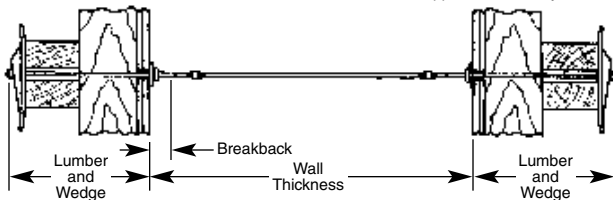
| Cone Selection Chart | |
|----------------------|--------------|
| Diameter | Length |
| 3/4" | 1" 1-1/2" |
| 1" | 1" 1-1/2" |
| 1-1/4" | 1-1/2" 2" |

Note: Plastic Cones are designed to act as internal form spreaders only. They are not intended to support loads applied by personal fall arrest systems and/or scaffold brackets.

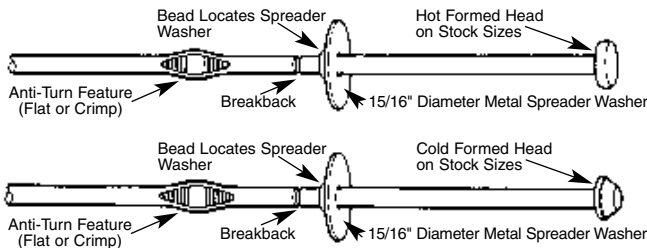
A-3 Standard Snap Tie

2,250 lbs. Safe Working Load

Approximate safety factor 2:1



Dayton/Richmond A-3 Standard Snap Ties are manufactured with either hot or cold forged integral heads. A-3 snap ties have a nominal 1" breakback with 1/4" and 1/2" breakbacks available on special order. Breakbacks over 1" can be provided on special order, but due to the increased concrete bond Dayton/Richmond cannot guarantee that the ties will consistently provide proper breakback. Coating the tie ends with wax will aid in breakback operation.



Each A-3 Snap Tie is fabricated with flats or crimps to prevent the snap tie from turning in the concrete during breakback operations. A-3 Snap Ties are available with fixed metal spreader washers.

A-3 Heavy Snap Tie

3,350 lbs. Safe Working Load

Approximate safety factor 2:1

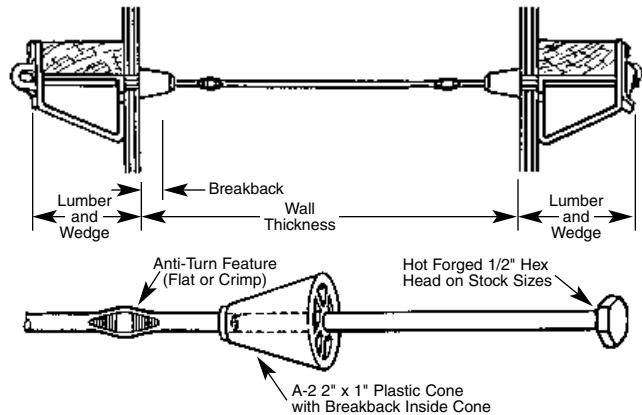
Dayton/Richmond A-3 Heavy Snap Ties are used when a higher safe working load is required. The A-3 snap tie is manufactured with cold forged integral heads and is equipped with flats or crimps to prevent turning.

A-4 Hex Head Snap Tie

2,250 lbs. Safe Working Load

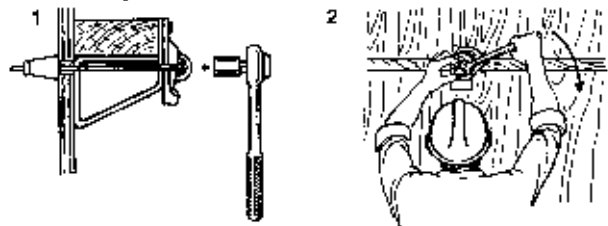
Approximate safety factor 2:1

Dayton/Richmond A-4 Hex Head Snap Ties are manufactured with hot forged integral 1/2" hex shaped heads. The hex head allows short-end snap ties to be broken back with the formwork still in place.



The standard A-4 uses 1" x 1" A-2 Plastic Cones to provide a nominal 1" breakback. Other size cones are available on special order.

How to Break Back A-4 Snap Ties



1. Place a 1/2" six-point socket and ratchet over the head of the tie.
2. Push the bracket eccentric away from the tie head.
3. Standing in front of the tie, hold the socket on the hex head with one hand and turn the ratchet with the other. A 1/4 to 1/2 turn of the ratchet will normally break the tie end.

A-31 Hex Head Snap Tie Socket



Dayton/Richmond A-31 Hex Head Snap Tie Socket is used with a standard socket wrench to break A-4 Hex Head Snap Ties.

A-16 Omni Wedge

Dayton/Richmond A-16 Omni Wedge is a high strength snap tie wedge designed to slip over the head of standard or heavy-duty snap ties to provide ample bearing area for proper load distribution into the wales.

