

## B-14 Coil Bolts

Dayton/Richmond B-14 Coil Bolts are designed for ease of use and durability. Coil bolts have fast acting, self-cleaning coil threads. B-14 Coil Bolts may be fabricated from ASTM A-307 blanks or from B-12 Coil Rod with welded B-13 Coil Nut heads.

Coil bolts are designed to be reusable, but they do wear and must be continuously inspected and replaced when wear or damage is noted. A waterproof grease should be applied to the portion of bolt that will be embedded in the concrete. This will facilitate bolt removal from the set concrete.



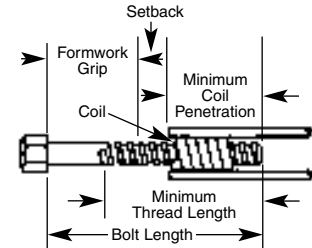
### Minimum Coil Penetration Information

When determining the minimum required overall length of coil bolts, you must consider the following items:

Formwork grip (including washer thickness).

Setback of the form tie or insert.

Minimum coil penetration (applies to all coil products).



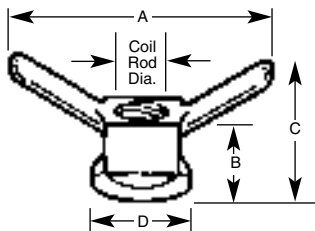
**B-14 Coil Bolt Selection and Minimum Coil Penetration Chart**

1/2" Dia.		3/4" Dia.		1" Dia.		1-1/4" Dia.		1-1/2" Dia	
Forged Hex Head		Forged Hex Head		Forged Hex Head		Forged Hex Head		Forged Hex Head	
Safe Work Load		Safe Work Load		Safe Work Load		Safe Work Load		Safe Work Load	
Tension	Shear	Tension	Shear	Tension	Shear	Tension	Shear	Tension	Shear
Under 6" 4,125 lbs.	Under 6" 2,750 lbs.	9,000 lbs.	6,000 lbs.	18,000 lbs.	12,000 lbs.	27,000 lbs.	18,000 lbs.	41,250 lbs.	27,500 lbs.
6" & Over 6,750 lbs.	6" & Over 4,500 lbs.								
Minimum Coil Penetration 2"		Minimum Coil Penetration 2-1/4"		Minimum Coil Penetration 2-1/2"		Minimum Coil Penetration 2-1/2"		Minimum Coil Penetration 3"	
Minimum Root Area .1385 Sq. In.		Minimum Root Area .3079 Sq. In.		Minimum Root Area .5410 Sq. In.		Minimum Root Area .9161 Sq. In.		Minimum Root Area 1.3890 Sq. In.	
Threads Per Inch 6		Threads Per Inch 4-1/2		Threads Per Inch 3-1/2		Threads Per Inch 3-1/2		Threads Per Inch 3-1/2	
Bolt Length	Minimum Thread Length	Bolt Length	Minimum Thread Length	Bolt Length	Minimum Thread Length	Bolt Length	Minimum Thread Length	Bolt Length	Minimum Thread Length
3"	2-1/4"	3"	2-1/4"	3"	2"	3"	2"	—	—
4"	3-1/4"	4"	3-1/4"	4"	3"	4"	3"	4"	3"
5"	4-1/4"	5"	4-1/4"	5"	4"	5"	4"	5"	4"
6"	5"	6"	5"	6"	5"	6"	5"	6"	5"
Over 6"	5"	Over 6"	5"	Over 6"	5"	Over 6"	5"	Over 6"	5"

Approximate safety factor 2:1

## B-39 Wing Nut

Dayton/Richmond B-39 Wing Nut is made of ductile iron and can be used for any application requiring quick removal and application of a nut.



**B-39 Wing Nut Selection Chart**

Coil Rod Diameter	Safe Working Load Tension (lbs.)	A	B	C	D
1/2"	9,000	5"	1-1/4"	2-3/8"	1-3/8"
3/4"	18,000	5-7/8"	1-1/4"	2-1/2"	1-3/4"
7/8"	18,000	6"	1-5/8"	2-3/4"	1-3/4"
1"	38,000	6"	1-5/8"	3"	2"
1-1/4"	52,000	5-5/8"	1-5/8"	2-3/4"	2-1/4"
1-1/2"	80,000	6-3/4"	1-7/8"	2-3/4"	2-7/8"

SWL are based on 1/2" setback from face of concrete.

Note: Wing nuts may vary slightly in configuration from that shown.