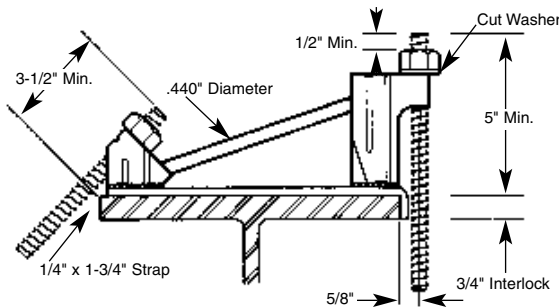


C-62 45° Pres-Steel Hanger

The C-62 45° Pres-Steel Hanger consists of a 1/2" 90° end section with flared legs and a 1/2" 45° end section welded to a wire strut. This assembly is then welded to a 1/4" x 1-3/4" steel strap equipped with a 3/4" interlock end. This is an excellent hanger to use when a haunch is required (up to 2-3/4") on the interior side of the beam and a finishing and/or conveyor machine is to be supported on the overhang formwork.

Note: To obtain the safe working loads listed below, a 1/2" Cut Washer must be used between the top of the 90° end section and the 1/2" Coil Nut.



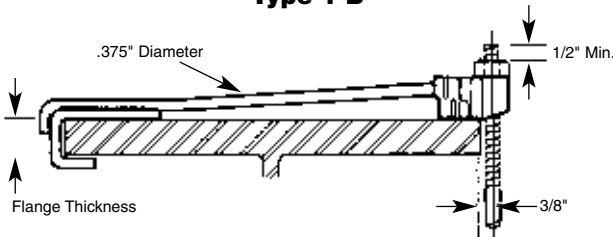
Safe Working Load
4,000 lbs. on 45° Side
2,800 lbs. on 90° Side

Approximate safety factor 2:1

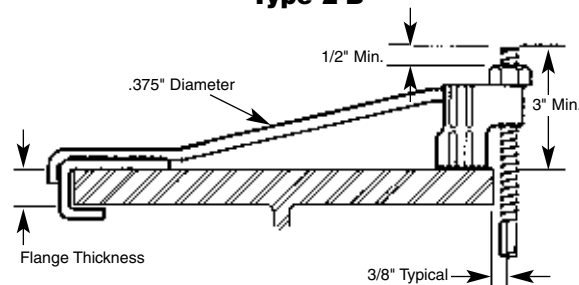
C-63 45° Pres-Steel Hook Hanger, Type 1-B and Type 2-B

The C-63 45° Pres-Steel Hook Hanger **Type 1-B** is manufactured with a 1/2" 90° end section welded to the end of a wire strut. The other end of the wire strut is welded to a reinforced 180° "wrap-around" steel strap. The wrap-around end is designed to slip over the flange of a steel bridge beam. The **Type 2-B** hanger is designed to accommodate up to 1" haunch height.

Type 1-B



Type 2-B

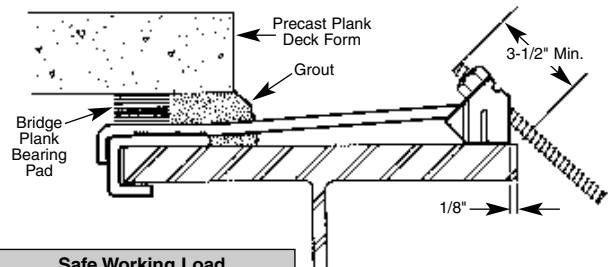


Safe Working Load
Type 1-B - 3,500 lbs.
Type 2-B - 2,375 lbs.

Approximate safety factor 2:1

C-63 45° Pres-Steel Hook Hanger Type 4-AB and Type 5-AB

The C-63 45° Pres-Steel Hook Hanger – **Type 4-AB** is manufactured with a 1/2" 45° end section welded to the end of a wire strut. The other end of the wire strut is welded to a reinforced 180° "wrap-around" steel strap. The wrap-around end is designed to slip over the flange of a steel bridge beam. **Type 5-AB** is similar to the Type 4-AB with the exception of the end section which is 3/4". These hangers are used when one-sided forming is required and field welding is prohibited. C-63 hangers can be furnished for electro-plated or hot dip galvanized corrosion resistance, if required.



Safe Working Load
4-AB - 5,000 lbs. - 1/2" Bolt Dia.
5-AB - 5,000 lbs. - 3/4" Bolt Dia.

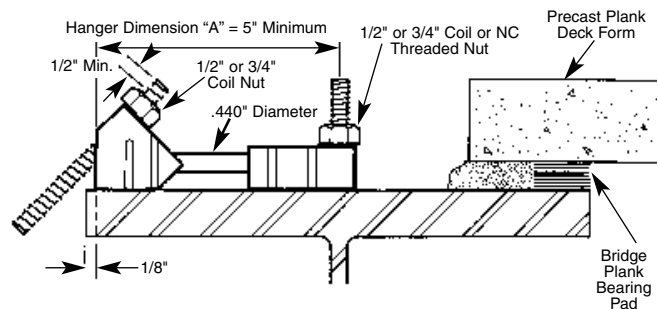
Approximate safety factor 2:1

C-64 45° Pres-Steel Hanger Type 4-A, 4-AN and Type 5-AN

The C-64 45° Pres-Steel Hanger consists of a 90° end section and a 45° end section welded to a single wire strut. The **Type 4-A** is fabricated with a 1/2" 45° end section and a 1/2" 90° end section. **Type 4-AN** is similar with the exception of the 90° end section is a 3/4" unit. **Type 5-AN** is similar to the 4-A but has a 3/4" 90° end section and a 3/4" 45° end section.

The C-64 hangers work well on bridge rehab projects, bridge widening jobs and other similar construction where only exterior formwork support is required. Two appropriate sized B-13 Hex Nuts are included with each hanger.

The actual safe working load of the C-64 hangers is highly dependent on the strength of the weld stud, as well as the strength of the weld itself. The safe working load is based on the use of a properly welded 3/4" diameter stud with a minimum tensile strength of 55,000 psi.



C-64 Pres-Steel Hanger Selection Chart

Type	Maximum Safe Working Load	Bolt Diameter	
		45° End	90° End
4-A	6,000 lbs.	1/2"	1/2"
4-AN	6,000 lbs.	1/2"	3/4"
5-AN	6,000 lbs.	3/4"	3/4"

Approximate safety factor 2:1