



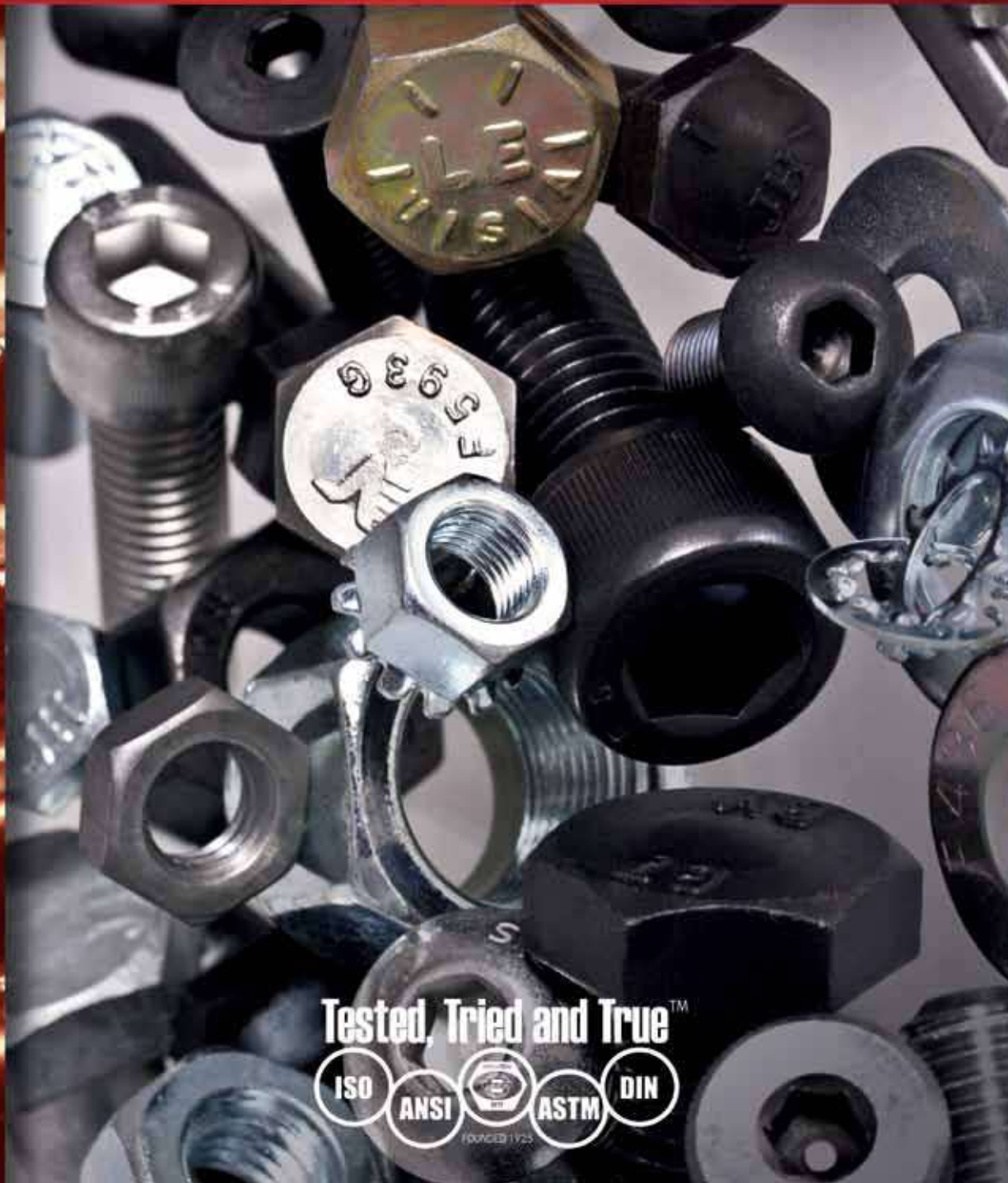
MASTER CATALOG

BRIGHTON-BEST INTERNATIONAL

**2013
Version**

BBI products and
services offered
exclusively through
distribution

USA
USAMC022013



Tested, Tried and True™



Terms and Conditions of Sale

GUARANTEE:

All Brighton-Best International, Inc. products are manufactured to rigid quality control standards that meet or exceed industry standards. Records and tests pertaining to the rigid specifications of Brighton-Best International, Inc. are on file and available upon request.

PLATING:

Fasteners plated by sources other than those approved by BBI are not guaranteed and not subject to return.

MODIFICATION:

Fasteners that have been modified or altered in any way by sources other than those approved by BBI are not guaranteed and not subject to return.

CLAIMS/RETURNS:

Any cancellation or returns must be pre-authorized by Brighton-Best International, goods must be returned in original boxes, contain original quantities, and be in resaleable condition. Returns will only be accepted with Material Return Authorization documents (MRA) from Brighton-Best, within 30 days of invoice date. A restocking fee may apply to returned goods. Any product that has been reworked or specially manufactured cannot be returned for credit. Customer assumes full responsibility for any damaged or lost material (including filing of any and all freight claims with the carrier) for shipments with terms of delivery of "Collect" or "3rd Party". Damage/Discrepancy on any BBI paid shipment must be reported within 7 days from the day of receipt (i.e. signing of the proof of delivery) and unaltered before carrier's inspection. If customer fails to comply with the above policy, BBI is not responsible for the damage / discrepancy.

SALES:

All prices are subject to change without notice. All written quotations are based on current market conditions and are valid as stipulated on the BBI quotation form.

LIMITED WARRANTY AND EXCLUSIVE REMEDY:

Brighton-Best International, Inc. warrants that the products in this catalog conform to industry standards as noted herein. THIS WARRANTY IS EXPRESSLY GIVEN IN LIEU OF ANY AND ALL OTHER EXPRESS OR IMPLIED WARRANTIES, INCLUDING ANY IMPLIED WARRANTY OF MERCHANTABILITY OR FITNESS FOR A PARTICULAR PURPOSE, AND IN LIEU OF ANY OTHER OBLIGATION ON THE PART OF BRIGHTON-BEST INTERNATIONAL, INC. Brighton-Best International, Inc. will replace free of charge (excluding all shipping and handling costs) any products which have not been produced in accordance with these industry standards. This warranty shall not extend to include any products which may have been plated, modified, misused or abused by the end user. Brighton-Best International, Inc., in its sole discretion, shall determine compliance with the warranty set forth above. THE REMEDY PROVIDED FOR HEREIN SHALL BE THE EXCLUSIVE REMEDY FOR ANY BREACH OF WARRANTY OR ANY CLAIM ARISING IN ANY WAY OUT OF THE MANUFACTURE, SALE, OR USE OF THESE PRODUCTS. In no event shall Brighton-Best International, Inc. be liable for consequential, incidental or any other damages of any nature whatsoever, except as set forth herein for any breach of warranty or any claim arising in any way out of the manufacture, sale or use of these products. This warranty shall be the sole warranty, expressed or implied.

Contents

Socket Products	
Socket Cap Screws	2
Flat Socket Cap Screws	3
Button Socket Cap Screws	4
Set Screws	5
Shoulder Bolts	6
Low Head Socket Caps / Pipe Plugs	7
Dowel Pins	8
Square Head Set Screws	9
Hex Keys	10
Metric Socket Products	11
Metric Set Screws	12
Metric Dowel Pins / Keys	13
Cap Screws / Machine Bolts Products	
Grade 2 Hex Cap Screws	14
Hex Bolts	15
Grade 5 Hex Cap Screws	16
Grade 8 Hex Cap Screws	17
Stainless Hex Cap Screws	18
L9	19
Tap Bolts	20
Hex Lag Screws	21
Structural Bolts	22
Structural Nuts	23
Assorted Bolts	24
Carriage Bolts	25
Metric Hex Heads	26
Screws Products	
Machine Screws	27
Stainless Steel Machine Screws	28
Construction Screws	29
Stainless Steel Self-Tapping Screws	30
Self-Tapping Screws	31
Nut Products	
Hex Nuts	32
Heavy Hex Nuts	33
Stainless Hex Nuts	34
Hex Jam Nuts / Machine Screw Nuts	35
Nylon Insert Locknuts	36
Stainless Locknuts	37
All Metal Locknuts	38
Assorted Nuts	39
Metric Nuts	40
Washer Products	
Flat Washers	41
Assorted Washers	42
Split Lock Washers	43
All Thread Products	
Threaded Products	44
Anchor Products	
Anchor Products	45
Miscellaneous	
Miscellaneous	46

Socket Cap Screws



Family Code	Description
011/581	Alloy (Inch) Plain
872	Alloy (Inch) Zinc Bake
837	Alloy (Inch) Mechanical Zinc
015	Alloy (Inch) Plain Nylon Patch
307	Alloy (Inch) Plain 1936 Series
012/592	Stainless Steel 18-8 (Inch)
014	Stainless Steel 316 (Inch)
016	Stainless Steel 18-8 (Inch) Nylon Patch
017	Socket Head Cap Screws Silicon Bronze
018	Socket Head Cap Screws Nickel- Copper Alloy

PRODUCT SIZE / RANGE

Diameter	Min. Length	Max Length
#0	1/16	1
#1	1/8	1/4
#2	3/32	1 1/2
#3	1/8	2
#4	1/8	2 1/2
#5	1/8	3
#6	1/8	3
#8	1/8	4
#10	3/16	6
#12	3/8	2 1/2
1/4	3/16	8
5/16	1/4	10
3/8	3/8	10
7/16	1/2	6
1/2	3/8	16
9/16	1	8
5/8	5/8	16
3/4	3/4	20
7/8	1 1/4	20
1	1 1/2	20
1 1/8	2	16
1 1/4	2	20
1 3/8	3	20
1 1/2	2 1/2	20
1 3/4	3	20
2	3	20
2 1/2	6	12



Flat Socket Cap Screws



Family Code	Description
211/721	Alloy (Inch) Plain
875	Alloy (Inch) Zinc Bake
840	Alloy (Inch) Mechanical Zinc
215	Alloy (Inch) Plain Nylon Patch
212/712	Stainless Steel 18-8 (Inch)

PRODUCT SIZE / RANGE

Diameter	Min. Length	Max Length
#0	1/8	1
#1	1/8	1
#2	1/8	1
#3	3/16	1
#4	3/16	1 1/4
#5	3/16	1 1/2
#6	3/16	3
#8	1/4	2 1/2
#10	1/4	3
#12	1/2	1
1/4	3/8	4
5/16	3/8	4
3/8	3/8	6
7/16	3/4	4
1/2	3/4	8
5/8	1	8
3/4	1	8
7/8	2	8
1	2	8
1 1/4	3	8



Button Socket Cap Screws



Family Code	Description
201/701	Alloy (Inch) Plain
874	Alloy (Inch) Zinc Bake
205	Alloy (Inch) Plain Nylon Patch
202/702	Stainless Steel 18-8 (Inch)

PRODUCT SIZE / RANGE

Diameter	Min. Length	Max Length
#0	1/8	1
#1	1/8	1
#2	1/8	1
#3	3/16	1
#4	1/8	1
#5	1/4	1 1/2
#6	1/8	3
#8	3/16	2
#10	1/4	3
1/4	1/4	4
5/16	3/8	4
3/8	3/8	5
1/2	3/4	4
5/8	1	4

Visit us today at www.brightonBEST.com

Set Screws



• CUP POINT

Family Code	Description
101/601	Alloy (Inch) Plain
873	Alloy (Inch) Zinc Bake
838	Alloy (Inch) Mechanical Zinc
105	Alloy (Inch) Plain Nylon Patch
816	Alloy (Inch) Locking Socket Jam Screw Plain
102/602	Stainless Steel 18-8 (Inch)
104	Stainless Steel 316 (Inch)

• KNURL CUP

Family Code	Description
111	Alloy (Inch) Plain

• CONE POINT

Family Code	Description
121/604	Alloy (Inch) Plain
704	Stainless Steel 18-8

• OVAL POINT

Family Code	Description
131/605	Alloy (Inch) Plain
705	Stainless Steel 18-8 (Inch)

• HALF DOG

Family Code	Description
141/606	Alloy (Inch) Plain
706	Stainless Steel 18-8 (Inch)

• FULL DOG

Family Code	Description
607	Alloy (Inch) Plain

• FLAT POINT

Family Code	Description
151/603	Alloy (Inch) Plain
703	Stainless Steel 18-8 (Inch)

PRODUCT SIZE / RANGE

Diameter	Min. Length	Max Length
#0	1/16	1/2
#1	1/16	1/2
#2	1/16	3/4
#3	1/16	5/8
#4	1/16	1
#5	3/32	1
#6	3/32	2
#8	1/8	2
#10	1/8	3
#12	3/16	1
1/4	3/16	3
5/16	1/4	3
3/8	1/4	4
7/16	3/8	4
1/2	3/8	6
9/16	1/2	1 1/2
5/8	1/2	6
3/4	5/8	6
7/8	7/8	6
1	1	6
1 1/8	1	3
1 1/4	1	4
1 1/2	1 1/2	4

Shoulder Bolts



Family Code	Description
221/711	Alloy (Inch) Plain
225	Alloy (Inch) Plain Nylon Patch
710	Stainless Steel 18-8 (Inch)

PRODUCT SIZE / RANGE

Diameter	Min. Length	Max Length
1/4	1/4	4
5/16	1/4	4
3/8	1/4	6
1/2	3/8	8
5/8	1/2	8
3/4	1/2	7 1/2
1	1	7
1 1/4	2 1/4	6



Visit us today at www.brightonBEST.com

Low Head Socket Caps / Pipe Plugs



• LOW HEAD SOCKET CAPS

Family Code	Description
019	Alloy (Inch) Plain

PRODUCT SIZE / RANGE

Diameter	Min. Length	Max Length
#8	3/8	1
#10	3/8	1
1/4	3/8	1 1/4
5/16	1/2	1 1/2
3/8	1/2	1 1/2
1/2	3/4	1 1/2

• PIPE PLUGS

Family Code	Description
231	Alloy (Inch) Plain Hex Dry Seal 3/4 Taper
233	Alloy (Inch) Plain Hex Flush Seal 7/8 Taper
230	Brass (Inch) 3/4 Taper
232	Stainless Steel 18-8 (Inch) Dry Seal 3/4 Taper

PRODUCT SIZE / RANGE

Min. Size	Max Size
1/16	2

Visit us today at www.brightonBEST.com



Dowel Pins



Family Code	Description
241	Alloy (Inch) Plain
261	Alloy (Inch) Pull Out Plain
251	Alloy (Inch) .001 Oversize Plain
242	Stainless Steel 18-8 (Inch)
243	Stainless Steel 416 (Inch)
245	Stainless Steel 316 (Inch)

PRODUCT SIZE / RANGE

Diameter	Min. Length	Max Length
1/16	3/16	1
3/32	3/16	1 1/8
1/8	1/4	2
3/16	3/8	3
1/4	3/8	4
5/16	1/2	4
3/8	1/2	4
7/16	1	3
1/2	3/4	4
5/8	1	5
3/4	2	6
7/8	2	6
1	2	6

Visit us today at www.brightonBEST.com



Square Head Set Screws



Family Code	Description
409/411	Case Hardened (Inch) Cup Point Plain
410	Case Hardened (Inch) Half Dog Point Plain
412	Case Hardened (Inch) Cup Point Fine Thread Plain
413	Case Hardened (Inch) Flat Point Plain
414	Case Hardened (Inch) Cone Point Plain
415	Case Hardened (Inch) Oval Point Plain
805	Alloy (Inch) Cup Point Plain
408	Stainless 18-8 (Inch) Cup Point

PRODUCT SIZE / RANGE

Diameter	Min. Length	Max Length
1/4	3/8	6
5/16	1/2	6
3/8	1/2	8
7/16	3/4	6
1/2	5/8	10
9/16	1	4
5/8	3/4	10
3/4	1	12
7/8	2	12
1	2	12
1 1/8	2	12
1 1/4	2	12
1 3/8	2	12
1 1/2	2	12



Hex Keys



• SHORT ARM

Family Code	Description
511	6150 CRV Alloy (Inch) (Import) Plain
509	8650 Alloy (Inch) (USA) Plain

• LONG ARM

Family Code	Description
512	6150 CRV Alloy (Inch) (Import) Plain
519	8650 Alloy (Inch) (USA) Plain

• Hex Key Sets

Family Code	Description
529	8650 Alloy (Inch/Metric) Sets (USA) Plain

PRODUCT SIZE / RANGE

	Min. Length	Max Length
Short Arm	0.028	1 7/8
Long Arm	0.05	1 1/4
Hex Key Set	TX2	3/8

Visit us today at www.brightonBEST.com



Metric Socket Products



• SOCKET CAPS

Family Code	Description
532	Alloy (Metric) Plain 12.9 DIN 912
876	Alloy (Metric) 12.9 Zinc Bake
538	Stainless Steel A2 (Metric)

• FLAT SOCKET CAPS

Family Code	Description
534	Alloy (Metric) 12.9 Plain DIN 7991
878	Alloy (Metric) 12.9 Zinc Bake
823	Stainless Steel A2 (Metric)

• BUTTON SOCKET CAPS

Family Code	Description
535	Alloy (Metric) 12.9 Plain ISO 7380
879	Alloy (Metric) 12.9 Zinc Bake ISO 7380
824	Stainless Steel A2 (Metric)

• SOCKET SHOULDER CAPS

Family Code	Description
537	Alloy (Metric) 12.9 Plain ISO 7379

• LOW HEAD SOCKET CAPS

Family Code	Description
531	Alloy (Metric) Plain 10.9 DIN 7984
544	Stainless Steel A2 (Metric)

PRODUCT SIZE / RANGE

Min. Diameter	Max Diameter
M1.4	M48



Metric Set Screws



• CUP POINT

Family Code	Description
533	Alloy (Metric) Plain 14.9 DIN 916
877	Alloy (Metric) 14.9 Zinc Bake DIN 916
539	Stainless Steel A2 (Metric)

• KNURL CUP

Family Code	Description
821	Alloy (Metric) Plain 14.9 ISO 4029

• CONE POINT

Family Code	Description
831	Alloy (Metric) 14.9 Plain DIN 914

• FULL DOG

Family Code	Description
833	Alloy (Metric) 14.9 Plain DIN 915

• FLAT POINT

Family Code	Description
832	Alloy (Metric) 14.9 Plain DIN 913

PRODUCT SIZE / RANGE

Min. Diameter	Max Diameter
M1.6	M30

Visit us today at www.brightonBEST.com



Metric Dowel Pins / Keys



• DOWEL PINS

Family Code	Description
536	Alloy (Metric) Plain DIN 6325
548	Alloy (Metric) Pull Out Plain DIN 7979
550	Stainless Steel A2 (Metric) EN ISO 2338
551	Stainless Steel A4 (Metric) EN ISO 2338

PRODUCT SIZE / RANGE

Min. Diameter	Max Diameter
M1.5	M25

• KEYS

Family Code	Description
513	6150 CRV Alloy (Metric) (Import) Plain Short Arm
530	8650 Alloy (Metric) (USA) Plain Short Arm
528	8650 CRV Alloy (Metric) (USA) Plain Long Arm

PRODUCT SIZE / RANGE

Min. Diameter	Max Diameter
M0.7	M32

Visit us today at www.brightonBEST.com



Grade 2 Hex Cap Screws



Family Code	Description
402	Grade 2 (Inch) Plain
403	Grade 2 (Inch) Zinc Plated

PRODUCT SIZE / RANGE

Diameter	Min. Length	Max Length
1/4	1/2	6
5/16	1/2	5 1/2
3/8	1/2	6
7/16	3/4	5 1/2
1/2	3/4	8
5/8	1	8
3/4	1	8
7/8	2	10
1	1 1/2	10



Visit us today at www.brightonBEST.com

Hex Bolts



Family Code	Description
493	A307 Grade A (Inch) Plain
494	A307 Grade A (Inch) Zinc
495	A307 Grade A (Inch) HDG
505	A193 Grade B7 Hvy Hex Plain
484	A307-B Heavy Plain

PRODUCT SIZE / RANGE

Diameter	Min. Length	Max Length
1/4	1/2	8
5/16	1/2	8
3/8	1/2	12
7/16	1 1/2	5
1/2	3/4	20
5/8	1	24
3/4	1 1/4	24
7/8	1 1/2	20
1	2	20
1 1/8	2 1/2	16
1 1/4	2 1/2	18
1 1/2	3	16
1 3/4	6 1/2	16
2	8	8
2 1/4	8	8
2 1/2	9	9

Visit us today at www.brightonBEST.com



Grade 5 Hex Cap Screws



Family Code	Origin	Finish
846	Imported	Plain
847	Imported	Zinc CR+3
458	Imported	Zinc-Yellow
456	USA	Plain
457	USA	Zinc CR+3

PRODUCT SIZE / RANGE

Diameter	Min. Length	Max Length
1/4"	3/8"	6"
5/16"	1/2"	7"
3/8"	1/2"	9"
7/16"	3/4"	7 1/2"
1/2"	3/4"	9"
9/16"	1"	6"
5/8"	1"	8"
3/4"	1"	10"
7/8"	1 1/2"	10"
1"	1 1/2"	12"
1 1/8"	2"	14"
1 1/4"	2"	14"
1 3/8"	3"	12"
1 1/2"	2 1/2"	12"

All diameters above 1", available in plain finish only

Visit us today at www.brightonBEST.com

Grade 8 Hex Cap Screws



Family Code	Description
451	Grade 8 (Inch) Plain (Import)
455	Grade 8 (Inch) Zinc/Yel (Import)
452	Grade 8 (Inch) Plain (USA)
454	Grade 8 (Inch) Zinc/Yel (USA)

PRODUCT SIZE / RANGE

Diameter	Min. Length	Max Length
1/4	1/2	6
5/16	1/2	6
3/8	1/2	6
7/16	3/4	6
1/2	3/4	8
9/16	1	6
5/8	1	8
3/4	1	8
7/8	1 1/2	8
1	1 1/2	16
1 1/8	2 1/4	16
1 1/4	2 1/4	16
1 3/8	4	16
1 1/2	3	16
1 3/4	4	16
2	4	16

Visit us today at www.brightonBEST.com

Stainless Hex Cap Screws



Family Code	Description
400	Stainless Steel 18-8 (Inch)
401	Stainless Steel 316 (Inch)
864	Stainless Steel 18-8 Full Thread (Inch)

PRODUCT SIZE / RANGE

Diameter	Min. Length	Max Length
1/4	1/2	6
5/16	1/2	6
3/8	1/2	6
7/16	3/4	6
1/2	3/4	8
9/16	1	6
5/8	1 1/4	8
3/4	1	8
7/8	1 1/2	8
1	1 1/2	8
1 1/8	2 1/2	12
1 1/4	2 1/2	12
1 1/2	3	12

Visit us today at www.brightonBEST.com



L9[®]



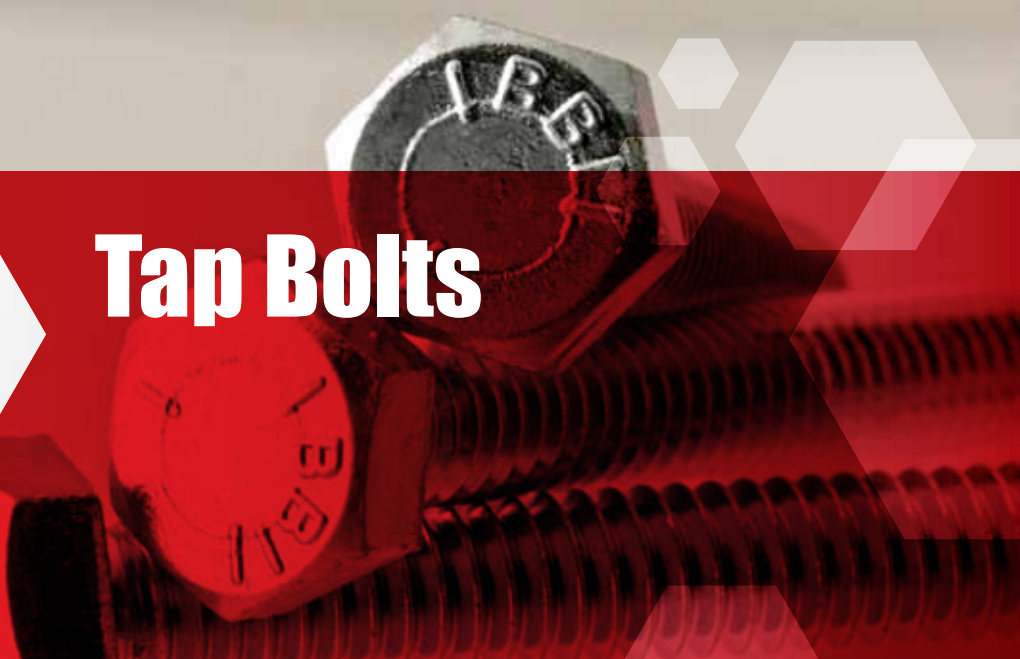
Family Code	Description
440	L9 hex head cap screw Zinc Yellow (Inch) (USA)
444	Hex Nuts Cad. Yellow & Wax (Inch) (USA)
446	L9 Collar locknuts Cad. Yellow & Wax (Inch) (USA)
447	Tension Flat Washers Zinc Yellow (Inch) (USA) USS
448	Tension Flat Washers Zinc Yellow (Inch) (USA) SAE

PRODUCT SIZE / RANGE

Diameter	Min. Length	Max Length
1/4	1/2	3
5/16	1/2	4
3/8	1/2	6
7/16	3/4	6
1/2	3/4	8
9/16	1	5
5/8	1	12
3/4	1 1/2	12
7/8	2	12
1	2	12
1 1/8	3	10
1 1/4	3	12
1 1/2	4	12

Visit us today at www.brightonBEST.com

Tap Bolts



Family Code	Description
499	A307 Grade A (Inch) Plain
500	A307 Grade A (Inch) Zinc
501	Grade 5 Hex Tap Bolts (Inch) Plain
502	Grade 5 Hex Tap Bolts (Inch) Zinc

PRODUCT SIZE / RANGE

Diameter	Min. Length	Max Length
1/4	3/4	6
5/16	1	6
3/8	1 1/4	6
7/16	1	4
1/2	1 1/2	6
5/8	2 1/4	6
3/4	3	6
1	4 1/2	4 1/2
1 1/4	6 1/2	6 1/2

Visit us today at www.brightonBEST.com

Hex Lag Screws



Family Code	Description
485	Plain (Inch)
486	Zinc (Inch)
487	HDG (Inch)
782	Stainless Steel 18-8 (Inch)

PRODUCT SIZE / RANGE

Diameter	Min. Length	Max Length
1/4	1	6
5/16	1	6
3/8	7/8	12
1/2	1 1/2	12
5/8	2	12
3/4	2 1/2	12



Visit us today at www.brightonBEST.com

Structural Bolts



Family Code	Description
503	A325 Type 1 Structural Bolts (Inch) Plain (USA)
480	A325 Type 1 Structural Bolts (Inch) HDG (USA)
504	A490 Type 1 Structural Bolts (Inch) Plain (USA)
496	A325 Type 1 (Inch) Plain (Import)
497	A325 Type 1 (Inch) HDG (Import)
508	A325 Type 1 T.C. Bolt Plain with A563 DH Hvy Hex Nut & Round F436 Washer (Import)
479	A490 Type 1 TC Bolt Plain Assembly (Import)
498	A490 Type 1 Hex Bolt (Inch) Plain (Import)

PRODUCT SIZE / RANGE

Diameter	Min. Length	Max Length
1/2	1 1/4	2 1/2
5/8	1 1/2	6
3/4	1 1/2	6
7/8	2	6
1	2	6
1 1/8	2 1/4	10
1 1/4	2 3/4	10

Visit us today at www.brightonBEST.com

Structural Nuts



Family Code	Description
314	A194 2H Heavy Hex Nut Plain
299	A194 2H Heavy Hex Nut Zinc
313	A194-2H Heavy Hex Nut HDG
294	A194 2H Heavy Hex Nut Plain (USA)
292	A194 2H Heavy Hex Nut HDG (USA)
334	A563 Grade C Heavy Hex Nut Plain
335	A563 GR DH Heavy Hex Nut HDG/Wax & Blue Dye

PRODUCT SIZE / RANGE

Min. Diameter	Max Diameter
1/4	3 1/2



Visit us today at www.brightonBEST.com

Assorted Bolts



Family Code	Description
404	Elevator Bolts Grade 1 Plain
405	Elevator Bolts Grade 1 Zinc CR+3
406	Hex Serrated Flange Screws Grade 5 Zinc CR+3
483	Timber Bolts A307 Grade A HDG
506	Grade 5 NO.3 Head Plow Bolts (Inch) Plain
507	Grade 5 NO.3 Head (Inch) Plow Bolts Zinc CR+3
747	Square Bolts A307 Grade A Plain
473	A307 Grade A Step Bolts Full Threaded Plain
474	A307 Grade A Step Bolts Full Threaded Zinc

PRODUCT SIZE / RANGE

Diameter	Min. Length	Max Length
3/8	1	3
7/16	1	3 1/2
1/2	1 1/4	4
5/8	1 1/2	4
3/4	2	3 1/2

Visit us today at www.brightonBEST.com

Carriage Bolts



Family Code	Description
488	A307 Grade A (Inch) Plain
489	A307 Grade A (Inch) Zinc
490	A307 Grade A (Inch) HDG
491	Grade 5 (Inch) Plain
492	Grade 5 (Inch) Zinc
781	Stainless Steel 18-8 (Inch)

PRODUCT SIZE / RANGE

Diameter	Min. Length	Max Length
#10	1/2	4
1/4	1/2	8
5/16	1/02	10
3/8	3/4	12
7/16	1	6
1/2	1	16
5/8	1 1/2	16
3/4	2	16



Visit us today at www.brightonBEST.com



Metric Hex Heads



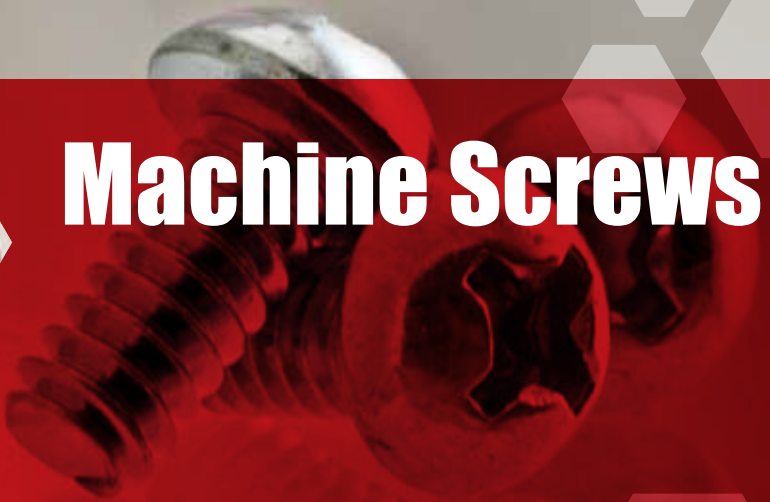
Family Code	Description
461	10.9 Plain DIN 931
462	10.9 Plain DIN 933
460	10.9 Zinc/Blue CR+3 DIN 931, 933
643	8.8 Plain DIN 933
644	8.8 Plain DIN 931
815	8.8 Zinc Blue CR+3 DIN 931, 933
830	Stainless Steel A2

PRODUCT SIZE / RANGE

Diameter	Min. Length	Max Length
M4	10	50
M5	10	50
M6	10	120
M8	10	180
M10	12	200
M12	16	220
M14	25	130
M16	25	250
M20	30	250
M24	40	250
M30	50	150

Visit us today at www.brightonBEST.com

Machine Screws



Family Code	Description
587	Phillips Pan Zinc CR+3
591	Slotted Pan Zinc CR+3
575	Indented Hex Zinc CR+3
576	Indented Hex Washer Zinc CR+3
577	Combination Phillips/Slotted Round Zinc CR+3
588	Phillips Round Zinc CR+3
583	Slotted Round Zinc CR+3
586	Phillips Flat Zinc CR+3
580	Slotted Flat Zinc CR+3
478	Slotted Flat Countersunk Cap Screws Plain
578	Combination Phillips/Slotted Truss Zinc CR+3
589	Phillips Truss Zinc CR+3
584	Slotted Truss Zinc CR+3
590	Phillips Oval Zinc CR+3
585	Slotted Oval Zinc CR+3
582	Slotted Fillister Zinc CR+3
579	Slotted Binder Undercut Zinc CR+3
593	Sems - Phillips Pan Zinc CR+3
594	Thumb Screw, Type A with Shoulder Zinc
595	Thumb Screw, Type B, No Shoulder Zinc

PRODUCT SIZE / RANGE

Diameter	Min. Length	Max Length
2-56	1/4	1/2
4-40	3/16	1 1/2
5-40	3/4	1
6-32	3/16	3 1/2
8-32	3/16	4 1/2
10-24	1/4	6
10-32	3/16	6
12-24	3/8	3
1/4	3/8	6
5/16	1/2	6
3/8	1/2	6



Visit us today at www.brightonBEST.com



Stainless Steel Machine Screws



Family Code	Description
771	Stainless Steel 18-8 (Inch) Phillips Flat Head
772	Stainless Steel 18-8 (Inch) Phillips Oval Head
773	Stainless Steel 18-8 (Inch) Phillips Pan Head
774	Stainless Steel 18-8 (Inch) Phillips Truss Head

PRODUCT SIZE / RANGE

Diameter	Min. Length	Max Length
#0	5/32	1/2
#2	5/32	5/8
#4	1/4	1 1/2
#6	1/4	3
#8	5/16	2 1/2
#10	3/8	4
#12	3/8	3
1/4	1/2	6
5/16	3/4	2
3/8	3	3

Visit us today at www.brightonBEST.com

Construction Screws



Family Code	Description
691	Drywall Screws, Phillips Bugle Phos
684	Drywall Screws, Phillips Bugle Zinc
690	Drywall Screws, Phillips Bugle Zinc Yellow
692	Drywall Screws, Twinfast K-Lath Zinc
689	Drywall Screws, Self Drilling #2PT, Phillips Bugle Phos
693	Self Drilling Screws Zinc
669	Self Drilling Screws HWH Un-slotted w/ Bonded Washer Zinc
686	Self Piercing Screws Zinc
687	Deck Screws Dacrotized
685	Concrete Screws Blue Finish
664	Deck Screw Square Drive Zinc Yellow, Hardened
665	Deck Screw Square Drive Phosphate, Hardened
666	Particle Board Screws Flat Head Square Drive Black Phos, Hardened
667	Particle Board Screws Flat Head Phillips Black Phos, Hardened
668	Self-Drilling Dry Wall Screws Bugle Head Phillips Zinc

PRODUCT SIZE / RANGE

Diameter	Min. Length	Max Length
#6	1/4	2 1/4
#7	1/2	2 1/2
#8	3/8	3
#10	3/8	6
#12	3/4	3
3/16	1 1/4	3 1/4
1/4	1/2	5



Visit us today at www.brightonBEST.com



Stainless Steel Self-Tapping Screws



Family Code	Description
790	Stainless Steel 18-8 (Inch) Philips Flat Head
791	Stainless Steel 18-8 (Inch) Philips Oval Head
792	Stainless Steel 18-8 (Inch) Philips Pan Head
793	Stainless Steel 18-8 (Inch) Philips Truss Head

PRODUCT SIZE / RANGE

Diameter	Min. Length	Max Length
#6	3/8	1 1/2
#8	1/2	3
#10	5/8	3
#12	3/4	3
#14	3/4	3



Visit us today at www.brightonBEST.com

Self-Tapping Screws



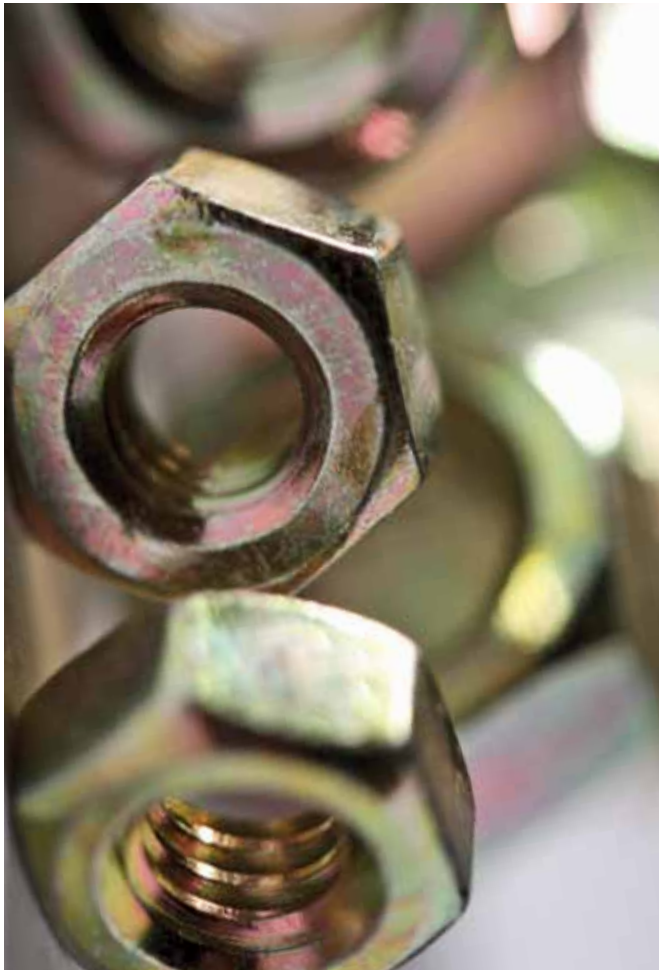
Family Code	Description
696	Type A Tapping Screws Zinc
697	Type AB Tapping Screws Zinc
698	Type B Tapping Screws Zinc
695	Type 23 Thread Cutting Screws Zinc
700	Type 25 Thread Cutting Screws Zinc
699	Type F Thread Cutting Screws Zinc
688	Type F Floorboard Thread Cutting Screws Phos
694	Thread Rolling Screws Zinc Wax
709	Drive Screws Type U Round Head Zinc

PRODUCT SIZE / RANGE

Diameter	Min. Length	Max Length
#4	1/4	1
#5	1/2	1
#6	1/4	2 1/4
#7	3/8	1 1/2
#8	1/4	4
#10	3/8	4
#12	1/2	4
#14, 1/4	1/2	4
5/16	1/2	3

Visit us today at www.brightonBEST.com

Hex Nuts



Family Code	Description
317	Finished Hex Nut (Inch) Plain
319	Finished Hex Nut (Inch) Zinc
321	Finished Hex Nut (Inch) Zinc Yellow
323	Finished Hex Nut (Inch) HDG
849	Hex Nuts Grade 5 (Inch) Plain
848	Hex Nuts Grade 5 (Inch) Zinc
760	Hex Nuts Grade 5 (Inch) Zinc Yellow
308	Hex Nuts Grade 8 (Inch) Plain
306	Hex Nuts Grade 8 (Inch) Zinc Yellow
328	Hex Nuts Grade 8 Alloy (Inch) Zinc Bake

PRODUCT SIZE / RANGE

Min. Diameter	Max Diameter
1/4	3

Visit us today at www.brightonBEST.com

Heavy Hex Nuts



Family Code	Description
314	A194 2H Heavy Hex Nut Plain
299	A194 2H Heavy Hex Nut Zinc
313	A194-2H Heavy Hex Nut HDG
294	A194 2H Heavy Hex Nut Plain (USA)
292	A194 2H Heavy Hex Nut HDG (USA)
318	A563-A Heavy Hex Nut (Inch) Plain
320	A563-A Heavy Hex Nut (Inch) Zinc
322	A563-A Heavy Hex Nut (Inch) Zinc Yellow
324	A563-A Heavy Hex Nut (Inch) HDG

PRODUCT SIZE / RANGE

Min. Diameter	Max Diameter
1/4	3 1/2



Visit us today at www.brightonBEST.com

Stainless Hex Nuts



Family Code	Description
762	Stainless Steel 18-8 (Inch) Hex Nuts
763	Stainless Steel 316 (Inch) Hex Nuts
764	Stainless Steel 18-8 (Inch) Machine Screw Nuts
766	Stainless Steel 18-8 (Inch) Jam Nut
769	Stainless Steel 18-8 (Inch) Heavy Hex Nuts
569	Acorn Nut Stainless Steel 304 (Inch) 1 Piece

PRODUCT SIZE / RANGE

Min. Diameter	Max Diameter
1/4	1 1/2



Visit us today at www.brightonBEST.com



Hex Jam Nuts / Machine Screw Nuts

• HEX JAM NUTS

Family Code	Description
329	Finished Hex Jam Nut (Inch) Plain
330	Finished Hex Jam Nut (Inch) Zinc
331	Finished Hex Jam Nut (Inch) Zinc Yellow
327	Finished Hex Jam Nut (Inch) HDG
333	Heavy Hex Jam Nut (Inch) Plain
289	Heavy Hex Jam (Thin) Nuts Grade A Plain
290	Heavy Hex Jam (Thin) Nuts Grade A Zinc
526	Hex Jam Nut Class 04 (Metric) Zinc DIN 439B

PRODUCT SIZE / RANGE

Min. Diameter	Max Diameter
1/4	2 1/2

• MACHINE SCREW NUTS

Family Code	Description
332	Hex Machine Screw Nut (Inch) Plain
325	Hex Machine Screw Nut (Inch) Zinc
298	Square Machine Screw Nuts Zinc

PRODUCT SIZE / RANGE

Min. Diameter	Max Diameter
#2	3/8



Visit us today at www.brightonBEST.com

Nylon Insert Locknuts



Family Code	Description
305	Locknut Nylon Insert Zinc (Inch)
812	Hex Locknut Zinc (Metric)
828	Locknut Nylon Insert Grade C Phosphate & Oil
845	Locknut Nylon Insert Grade C Zinc Yellow

PRODUCT SIZE / RANGE

Min. Diameter	Max Diameter
#1	3

Min. Diameter	Max Diameter
M3	M42



Visit us today at www.brightonBEST.com

Stainless Locknuts



Family Code	Description
310	Nylon Insert 18-8 Stainless (Inch)
311	Nylon Insert 316 Stainless (Inch)
767	K Locknut 18-8 Stainless (Inch)

PRODUCT SIZE / RANGE

Diameter	Length
#1	1



Visit us today at www.brightonBEST.com

All Metal Locknuts



Family Code	Description
825	Grade C Zinc/Wax (Inch)
857	Serrated Flange Zinc (Inch)
858	External Tooth Keys Zinc (Inch)
859	Reversible (2 way) Zinc (Inch)
738	Class 8 (Metric) Zinc/Wax DIN 980V
826	Class 10 (Metric) Zinc/Wax DIN 980V
547	Class 8 (Metric) Serrated Flange Zinc DIN 6923

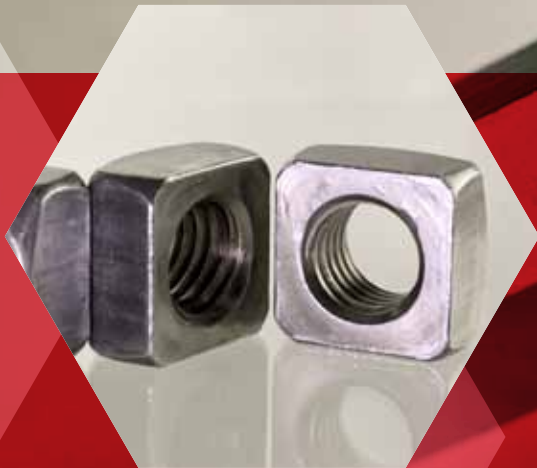
PRODUCT SIZE / RANGE

Min. Diameter	Max Diameter
#6	1



Visit us today at www.brightonBEST.com

Assorted Nuts



Family Code	Description
236	Square Nuts Grade 2 Plain
237	Square Nuts Grade 2 Zinc
238	Square Nuts Grade 2 HDG
301	Acorn Nut Nickel Plated
303	Hex Coupling Nut A563-A Zinc
863	Stamped and Cold Forged Wing Nut
286	Slotted Finished Hex Nuts Coarse Plain
287	Slotted Finished Hex Nuts Fine Zinc
288	Heavy Slotted Finished Hex Nuts Coarse Plain
284	Right Hand Wheel Nuts Zinc 60 Degree Taper
285	Hex Panel Nuts Zinc
546	Class 8 (Metric) Hex Flange Nut Zinc DIN 6923

PRODUCT SIZE / RANGE

Diameter	Min. Length	Max Length
#6	32	
1	2	13

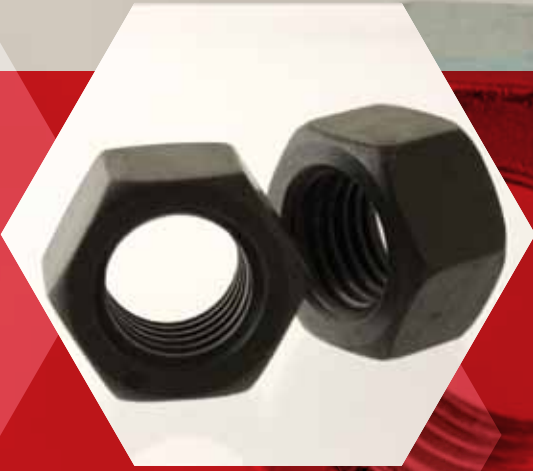
• TEE NUTS

Family Code	Description
302	3 and 4 Prong Zinc

PRODUCT SIZE / RANGE

Diameter	Length
6/32	1/4
3/8-16	7/16

Metric Nuts



Family Code	Description
572	Hex Nut, Class 6 DIN 934, Zinc CR+3, Med. Carbon (Metric)
557	Hex Nuts Class 8 Plain DIN 934
556	Hex Nuts Class 8 Zinc DIN 934
300	Hex Nuts Class 10 Plain DIN 934
315	Hex Nuts Class 10 Zinc DIN 934
812	Hex Locknuts Zinc DIN 982/985
312	Nylon Insert Locknuts DIN 985
834	Hex Nuts Stainless Steel A2

PRODUCT SIZE / RANGE

Min. Diameter	Max Diameter
M3	M42



Visit us today at www.brightonBEST.com

Flat Washers



• LOW CARBON

Family Code	Description
343	USS (Inch) Plain (50 lb Carton)
344	USS (Inch) Zinc CR+3 (50 lb Carton)
255	USS (Inch) Zinc/Yel (50 lb Carton)
345	USS (Inch) HDG (50 lb Carton)
346	SAE (Inch) Plain (50 lb Carton)
347	SAE (Inch) Zinc CR+3 (50 lb Carton)
256	SAE (Inch) Zinc/Yel (50 lb Carton)
385	SAE HDG (50lb Carton)
388	Fender Washers Plain (Inch)
360	Fender Washers Zinc CR+3 (Inch)
368	Flat Washer (Metric) Plain DIN 125A
370	DIN 125A Medium Carbon (Metric) Zinc/Blue CR+3

• THRU-HARDENED

Family Code	Description
353	USS Thru Hardened (Inch) Zinc/Yellow (Import)
352	USS Thru Hardened (Inch) Plain (USA)
850	USS Thru Hardened (Inch) Zinc CR+3 (USA)
351	USS Thru Hardened (Inch) Zinc/Yellow (USA)
371	ANSI B18.22M Thru Hardened (Metric) Zinc CR+3
376	SAE Thru Hardened (Inch) Zinc Bake CR+3
384	SAE Thru Hardened (Inch) Plain (Import)
383	SAE Thru Hardened (Inch) Zinc/Yellow (Import)
382	SAE Thru Hardened (Inch) Plain (USA)
852	SAE Thru Hardened (Inch) Zinc CR+3 (USA)
381	SAE Thru Hardened (Inch) Zinc/Yellow (USA)
386	F436 (Inch) Plain (USA)

• THRU-HARDENED

Family Code	Description
355	F436 (Inch) Plain (Import)
356	F436 (Inch) Zinc/Yellow (Import)
257	F436 (Inch) HDG (USA)
357	F436 (Inch) HDG (Import)
389	SAE Extra Heavy (Inch) Zinc/Yellow

• STAINLESS

Family Code	Description
390	Stainless Steel 18-8 (Inch) Brighton Best Standard
391	Stainless Steel 18-8 (Inch) Commercial Standard
392	Stainless Steel 18-8 (Inch) Fender Standard
393	Stainless Steel A2 (18-8) AN960
394	Stainless Steel A2 (18-8) MS15795
395	Stainless Steel A2 (18-8) NAS620
396	Stainless Steel A2 (18-8) N400
397	Stainless Steel A2 (18-8) AN960L
398	Stainless Steel 316 Commercial Standard
835	Stainless Steel A2 (Metric)
369	Stainless Steel A2 (Metric) DIN 125A

*393, 394, 395, 396, 397 dimensional conformance

PRODUCT SIZE / RANGE

Min. Diameter	Max Diameter
#10	3

*Size range varies by product

Min. Diameter	Max Diameter
M1.6	M48

Assorted Washers



• LOCK WASHERS

Family Code	Description
239	External Tooth Zinc
240	Internal Tooth Zinc

PRODUCT SIZE / RANGE

Min. Diameter	Max Diameter
#2	1'

• SQUARE WASHERS

Family Code	Description
296	Square Plate Washers Plain
297	Square Plate Washers HDG
377	Square Beveled Malleable Washers Plain
378	Square Beveled Malleable Washers HDG
379	Square Beveled F436 Hardened Washers Plain
380	Square Beveled F436 Hardened Washers HDG

PRODUCT SIZE / RANGE

Min. Diameter	Max Diameter
3/8	1 1/4

• ASSORTED WASHERS

Family Code	Description
253	Countersunk Finishing Washer Nickel Plated

PRODUCT SIZE / RANGE

Size
#6
#8
#10
#12
1/4
3/8



Split Lock Washers



• ALLOY

Family Code	Description
348	Alloy (Inch) Plain
349	Alloy (Inch) Zinc CR+3
350	Alloy (Inch) HDG
340	Alloy Zinc/Yel

• THRU-HARDENED

Family Code	Description
013	Thru Hardened High Collar (Inch) Plain
341	Thru Hardened (Inch) Zinc/ Yellow (USA)
342	Thru Hardened (Inch) Plain (USA)
359	Thru Hardened (Inch) Zinc Bake CR+3
361	Thru Hardened (Metric) Zinc/ Blue CR+3 DIN 127B

• STAINLESS

Family Code	Description
754	Stainless Steel 18-8 (Inch)
755	Stainless Steel 316 (Inch)
836	Stainless Steel A2 (Metric)

PRODUCT SIZE / RANGE

Min. Diameter	Max Diameter
#2	1 3/4

Min. Diameter	Max Diameter
M5	M24

Threaded Products

• THREADED ROD

Family Code	Description
776	A307 All Thread Rod Plain
777	A307 All Thread Rod Zinc (Inch)
770	A307 All Thread Rod HDG (Inch)
778	A193 B7 All Thread Rod (Inch) Plain
886	Stainless Steel 18-8 (Inch) All Thread Rod
887	Stainless Steel 316 (Inch) All Thread Rod
871	Stainless Steel A2 18-8 (Metric) All Thread Rod

PRODUCT SIZE / RANGE

Diameter	Min. Length	Max Length
1/4	3	12
5/16	3	12
3/8	3	12
7/16	3	12
1/2	3	12
5/8	3	12
3/4	3	12
7/8	3	12
1	3	12
1 1/8	3	12
1 1/4	3	12
1 1/2	3	12

Min. Diameter	Max Diameter
M5	M24

• STUDS

Family Code	Description
775	A193 Grade B7 Stud Plain (Inch)

PRODUCT SIZE / RANGE

Diameter	Min. Length	Max Length
1/2	2	6
5/8	2 1/4	7 3/4
3/4	2 3/4	12
7/8	3 1/2	11 3/4
1	3 1/2	14
1 1/8	4 3/4	10
1 1/4	5 1/4	10
1 3/8	6 1/2	12
1 1/2	9	12 3/4
1 7/8	14 3/4	17 3/4
2	15 1/2	15 1/2



Anchor Products



• ANCHORS

Family Code	Description	Min. Size	Max Size
279	Wedge Anchors Zinc	1/4 x 1 3/4	1 x 15
276	Sleeve Anchors Acorn Nut Zinc	1/4 x 1 3/8	1/4 x 2 1/4
277	Sleeve Anchors Flat Head Zinc	1/4 x 2	3/8 x 6
278	Sleeve Anchors Hex Nut Zinc	5/16 x 1 1/2	3/4 x 6 1/4
268	Drop-In Anchors Zinc w/Setting Tool	1/4	3/4
264	Expansion Shield Single	1/4	3/4
263	Expansion Shield Double	1/4	3/4
266	Hammer Drive Anchors with Zinc Plated Steel Nails	3/16 x 7/8	1/4 x 3
265	Hammer Drive Anchors with 304 Stainless Steel Nails	1/4 x 1	1/4 x 2
267	Hollow Wall Anchors Zinc	1/8 XS	1/4 XL
272	Hollow Wall Drive Anchors Zinc	1/8 S	1/8 L
273/274	Lag Screw Expansion Shield	1/4 S	3/4 L
275	Machine Screw Anchors with Tool	#10-24	1/2-13
280	Wood Screw Lead Anchors	#6 x 3/4	#16 x 1 1/2
262	Toogle Wings Zinc	#6-32	1/2-13

• CONCRETE SCREWS

Family Code	Description	Min. Size	Max Size
685	Concrete Screws Blue Finish	3/16 x 1 1/4	1/4 x 3 1/4

Visit us today at www.brightonBEST.com

Miscellaneous



• COTTER PINS

Family Code	Description
260	Cotter Pins, Extended Prong Square Cut, Zinc

PRODUCT SIZE / RANGE

Diameter	Min. Length	Max Length
1/16	1/2	2
3/32	1/2	2
1/8	1/2	3
5/32	3/4	3
3/16	1	3
1/4	1	4
5/16	1 1/2	4
3/8	1 1/2	4



Visit us today at www.brightonBEST.com

Sockets

... Failure is not an option!

Only trust the **BEST**

- The most comprehensive line of standard and semi-standard socket products in the industry
- Metric / Inch
- Alloy / Stainless
- Deep inventories
- Highest quality A2LA / ISO certified supplier

- Full material and dimensional certifications
- Single head mark (YFS)
- Highest quality packaging
- Servicing our customers from 20 - U.S.A. / 31 - worldwide service centers
- Since 1925



**BRIGHTON-BEST
INTERNATIONAL**





**MACHINE
SCREWS**

**THE
BEST**

BUILD WITH

BBI has a full line of construction-related products with deep inventories and ready availability.



**THREADED
ROD & STUDS**

We carry a complete line of machine screws, tapping screws, drywall screws, self drilling screws, thread cutting screws, SEMS and concrete screws.

**STRUCTURAL
PRODUCTS**

**STRUCTURAL
PRODUCTS**



**HEX HEADS
NUTS & WASHERS**



**CARRIAGE
& LAG
SCREWS**



BRIGHTON-BEST INTERNATIONAL

Tested, Tried and True™

ISO ANSI ASTM DIN

FOUNDED 1925

www.brightonBEST.com 1 - 8 0 0 - 2 7 5 - 0 0 5 0

BBI products and services offered exclusively through distribution

• Atlanta, GA. • Boston, MA. • Charlotte, NC. • Chicago, IL. • Cincinnati, OH. • Cleveland, OH. • Dallas, TX. • Detroit, MI. • Houston, TX. • Logan Township, NJ. • Los Angeles, CA. • Maple Grove, MN. • Miami, FL. • Nashville, TN. • Portland, OR. • San Francisco, CA. • Sayreville, NJ. • Seattle, WA. • St. Louis, MO. • Tampa, FL.

Our Business is Understanding Yours

BBI: The Value-Driven, Global Leader in Fastener Distribution

• Expanding Distribution Centers:

- BBI Los Angeles distribution center has expanded an additional 90,000 sq. ft.
- BBI Dallas distribution center has expanded into an 180,000 sq. ft. facility.
- BBI Chicago distribution center will be expanding into a new 257,000 sq. ft. facility by the end of 2012.

• Expanded Product Lines:

BBI is adding over thirty new product lines this year, including a complete line of Anchor and Screw Products. Distributors can now combine more of their purchases to consolidate shipments, decreasing their shipping costs while increasing their productivity. Brighton-Best delivers the most complete line of fastener products in the industry.

• Expanded Packaged Offerings:

Distributors face many challenges in a competitive market. When buying in bulk does not fit your specific needs, our expanded offering of packaged products allows distributors to purchase in quantities that meet their requirements. Brighton Best International offers the distributor the ability to get our full line of products including low carbon, stainless steel, sockets and hex head products packaged from a single source; buying from BBI just got easier.



• Expanded Ready Mill:

Hex / Structural Program will include:

- A325 Structural Bolts Plain and HDG
- A325 TC Bolts Plain
- Grade 5 HCS Plain and Plated
- Grade 8 HCS Plain and Plated

Threaded Rod Program will include:

- A307 Threaded Rods Zinc and Plain

Washer Program will include:

- USS Washers: Plain / Plated / HDG
- SAE Washers: Plain / Plated
- Fender Washers Plated
- F436 Washers Plain / Plated / HDG



BRIGHTON-BEST INTERNATIONAL

www.brightonBEST.com • 1 - 8 0 0 - 2 7 5 - 0 0 5 0

USA • Atlanta, GA. • Boston, MA. • Charlotte, NC. • Chicago, IL. • Cincinnati, OH. • Cleveland, OH. • Dallas, TX. • Detroit, MI. • Houston, TX. • Logan Township, NJ. • Los Angeles, CA. • Maple Grove, MN. • Miami, FL. • Nashville, TN. • Portland, OR. • San Francisco, CA. • Sayreville, NJ. • Seattle, WA. • St. Louis, MO. • Tampa, FL. CANADA • Edmonton, AB. • Montreal, QC. • Toronto, ONT. • Vancouver, BC.

THE BEST GETS BETTER!

2012 BBI NEW PRODUCTS

10.9 HEX CAP SCREWS

HEX HEAD BOLT, 10.9 DIN 931, PLAIN, ALLOY (METRIC)	*
HEX HEAD SCREW, 10.9 DIN 933, PLAIN, ALLOY (METRIC)	*

8.8 HEX CAP SCREWS

HEX HEAD SCREW, 8.8 DIN 933, PLAIN, MEDIUM CARBON (METRIC)	*
HEX HEAD BOLT, 8.8 DIN 931, PLAIN, MEDIUM CARBON (METRIC)	*
HEX HEAD BOLT / SCREW, 8.8 DIN 931 / 933, ZINC BLUE CR+3, MEDIUM CARBON (IMPORT) (METRIC)	◇

A307 HEX BOLTS

HEX BOLTS, A307 GRADE A, PLAIN, LOW CARBON (INCH)	◇
HEX BOLTS, A307 GRADE A, ZINC CR+3, LOW CARBON (INCH)	◇
HEX BOLTS, A307 GRADE A, HDG, LOW CARBON (INCH)	◇

ACORN NUTS

ACORN NUT, NICKEL PLATED (INCH)	*
---------------------------------	---

B7 STUDS

FULLY THREADED STUD, A193 GRADE B7, PLAIN (INCH)	*
--------------------------------------------------	---

CLASS 10 HEX NUTS

HEX NUT, CLASS 10 DIN 934, PLAIN (METRIC)	*
-------------------------------------------	---

CLASS 8 HEX NUTS

HEX NUT, CLASS 8 DIN 934, ZINC CR+3, MED. CARBON (METRIC)	*
HEX NUT, CLASS 8 DIN 934, PLAIN, MED. CARBON (METRIC)	*

COUPLING NUTS

HEX COUPLING NUT, A563-A, ZINC CR+3 (INCH)	*
--------------------------------------------	---

DIN 125A FLAT WASHERS

FLAT WASHER, DIN 125A, PLAIN (METRIC)	*
FLAT WASHER, DIN 125A, ZINC CR+3, LOW CARBON (METRIC)	*

ELEVATOR BOLTS

FLAT COUNTERSUNK HEAD ELEVATOR BOLTS, GRADE 1, PLAIN (INCH)	*
FLAT COUNTERSUNK HEAD ELEVATOR BOLTS, GRADE 1, ZINC CR+3 (INCH)	*

FENDER WASHERS

FENDER WASHER, PLAIN (INCH)	*
-----------------------------	---

FLANGE SCREWS

HEX HEAD SERRATED FLANGE SCREWS, GRADE 5, ZINC CR+3 (INCH)	*
------------------------------------------------------------	---

SAE FLAT WASHERS HDG

SAE FLAT WASHER, HDG, LOW CARBON (INCH)	*
-----------------------------------------	---

SQUARE BOLTS

SQUARE HEAD BOLTS, A307 GRADE A, PLAIN (INCH)	*
-----------------------------------------------	---

SQUARE NUTS

SQUARE NUTS, GRADE 2, PLAIN (INCH)	*
SQUARE NUTS, GRADE 2, ZINC CR+3 (INCH)	*
SQUARE NUTS, GRADE 2, HDG (INCH)	*

* New Product ◇ Expanded Range

SQUARE WASHERS

SQUARE PLATE WASHER, PLAIN (INCH)	*
SQUARE PLATE WASHER, HDG (INCH)	*

TIMBER BOLTS

TIMBER BOLTS, A307 GRADE A, HDG (INCH)	*
----------------------------------------	---

ANCHORS

EXPANSION SHIELD DOUBLE ZINC ALLOY	*
EXPANSION SHIELD SINGLE ZINC ALLOY	*
HAMMER DRIVE ANCHOR MUSHROOM HEAD WITH 304 STAINLESS STEEL NAILS	*
HAMMER DRIVE ANCHOR MUSHROOM HEAD ZINC ALLOY WITH ZINC PLATED STEEL NAILS	*
HOLLOW WALL ANCHOR PAN HEAD PHILLIPS SLOTTED COMBO EXTRA SHORT ZINC	*
DROP-IN ANCHOR WITH SETTING TOOL ZINC CR+3	*
HOLLOW WALL DRIVE PAN HEAD PHILLIPS SLOTTED COMBO ANCHOR SHORT DRIVE	*
LAG SCREW EXPANSION SHIELDS SHORT ZINC ALLOY	*
LAG SCREW EXPANSION SHIELDS LONG ZINC ALLOY	*
MACHINE SCREW ANCHOR ZINC ALLOY CONE LEAD SLEEVE WITH TOOL	*
SLEEVE ANCHOR ACORN NUT ZINC	*
SLEEVE ANCHOR FLAT HEAD ZINC	*
SLEEVE ANCHOR HEX NUT ZINC	*
WEDGE ANCHORS ZINC	*
WOOD SCREW ANCHOR LEAD ALLOY	*

2H NUTS

HEX NUTS 2H HEAVY COARSE ZINC CR+3	*
------------------------------------	---

MACHINE SCREWS

MACHINE SCREW TRUSS HEAD PHILLIPS / SLOTTED COMBO COARSE ZINC CR+3	◇
MACHINE SCREW FLAT HEAD SLOTTED COARSE ZINC CR+3	◇
MACHINE SCREW FLAT HEAD PHILLIPS COARSE ZINC CR+3	◇
MACHINE SCREW PAN HEAD PHILLIPS SEMS ZINC CR+3 EXTERNAL TOOTH LOCKWASHER	*

CONSTRUCTION SCREWS

DRYWALL SCREWS, BUGLE, NC, PHILLIPS, ZINC CR+3	*
SELF-PIERCING SCREWS ZINC CR+3 INDENT HWH SL, TWINFAST	*
DECK SCREWS DACTROTIZED BUGLE PHILLIPS	*
FLOORBOARD THREAD CUTTING SCREWS TYPE F PHOSPHATE 6 LOBE FLAT	*
SELF DRILLING DRYWALL SCREWS, PHOS BUGLE PHILLIPS, #2 POINT	*
DRYWALL SCREWS, BUGLE, NC, PHILLIPS, ZY COARSE	*
DRYWALL SCREWS, BUGLE, NC, PHILLIPS, PHOS COARSE	◇
SELF DRILLING SCREWS INDENT HWH, #2 POINT ZINC CR+3	◇
CONCRETE SCREWS, BLUE FINISH, LOW CARBON (INCH)	*

SELF-TAPPING SCREWS

TAPPING SCREWS TYPE A PAN PH / SL COMBO ZINC CR+3	◇
TAPPING SCREWS TYPE AB TRUSS SLOT ZINC CR+3	◇

START

your search for fasteners at
www.brightonbest.com
 Your most powerful search engine for
 fasteners in the industry!



FOUNDED 1925®

BRIGHTON-BEST INTERNATIONAL

www.brighton**BEST**.com

1 - 8 0 0 - 2 7 5 - 0 0 5 0



BRIGHTON-BEST INTERNATIONAL

www.brightonbest.com | U.S.A. 1-800-275-0050

Tested, Tried and True™



Quality • Service • Value

Global Headquarters

Tainan, Taiwan
No.122, Yi-Lin Road,
Rende Township,
Tainan, 71752 Taiwan
Tel. 886-6-270-1756

USA Headquarters

Long Beach, California
5855 Obispo Ave.
Long Beach, CA 90805
Tel. 562-808-8000
Fax: 562-808-8105

U.S.A.

Atlanta, GA
2660 Pinemeadow Court
Duluth, GA 30096
Tel. 678-459-3700
Fax: 678-459-3720
WATS: 800-275-0056
atlanta@brightonbest.com

Boston, MA
24A Norfolk Ave.
Easton, MA 02375
Tel. 508-238-7982
Fax: 508-238-0382
WATS: 800-275-0037
boston@brightonbest.com

Charlotte, NC
2801-J Hutchison McDonald Rd. Suite H
Charlotte, NC 28269
Tel. 704-597-5977
Fax: 704-597-1599
WATS: 800-275-0050
charlotte@brightonbest.com

Chicago, IL
940 North Enterprise Street
Aurora, IL 60504
Tel. 630-898-9600
Fax: 630-898-9601
WATS: 800-929-2378
chicago@brightonbest.com

Cincinnati, OH
12076-A Best Place
Sharonville, OH 45241
Tel: 513-826-9824
Fax: 513-826-9829
WATS: 800-275-0048
cincinnati@brightonbest.com

Cleveland, OH
16065 Imperial Parkway
Strongsville, OH 44149
Tel. 440-238-1350
Fax: 440-238-2336
WATS: 800-275-0048
cleveland@brightonbest.com

Dallas, TX
3225 Roy Orr Blvd., Suite 200
Grand Prairie, TX 75050
Tel. 972-790-1201
Fax: 972-790-6265
WATS: 800-275-0054
dallas@brightonbest.com

Detroit, MI
51251 Fogg Industrial Court
Shelby Township, MI 48315
Tel. 586-412-3350
Fax: 586-412-3305
WATS: 800-275-0046
detroit@brightonbest.com

Houston, TX
8728 West, Little York Rd. Suite 190
Houston, TX 77040
Tel: 713-466-0336
Fax: 713-466-0385
WATS: 800-275-0054
houston@brightonbest.com

Logan Township, NJ
2100 Center Square Rd. Suite 100
Logan Township, NJ 08085
Tel. 856-241-9494
Fax: 856-241-9477
WATS: 800-935-2378
logan@brightonbest.com

Los Angeles, CA
12825 Carmenita Rd.
Santa Fe Springs, CA 90670
Tel. 562-921-6076
Fax: 562-921-7191
WATS: 800-275-0028
losangeles@brightonbest.com

Maple Grove, MN
9060 Zachary Lane North
Suite 111-116
Maple Grove, MN 55369
Tel. 763-425-9464
Fax: 763-425-9266
WATS: 800-275-0031
minnesota@brightonbest.com

Miami, FL
11800 N.W. 102 Road Suite 3&4
Medley, FL 33178
Tel. 305-885-3252
Fax: 305-885-3454
WATS: 800-275-0035
miami@brightonbest.com

Nashville, TN
737 Melrose Ave.
Nashville, TN 37211
Tel. 615-252-8801
Fax: 615-252-4974
WATS: 800-275-0029
nashville@brightonbest.com

Portland, OR
13440 NE Jarrett St.
Portland, OR 97230
Tel: 503-261-0660
Fax: 503-252-4093
WATS: 800-275-0686
portland@brightonbest.com

San Francisco, CA
30964 San Benito Court
Hayward, CA 94544
Tel. 562-921-6076
Fax: 562-921-7191
WATS: 800-275-0028
sanfrancisco@brightonbest.com

Sayreville, NJ
200 Kennedy Drive
Sayreville, NJ. 08872
Tel. 732-525-8400
Fax: 732-525-8408
sayreville@brightonbest.com

Seattle, WA
20208 87th Ave. South, Bldg. 1
Kent, WA, 98031
Tel: 503-261-0660
Fax: 503-252-4093
WATS: 800-275-0686
seattle@brightonbest.com

St. Louis, MO
1856 Craig Rd.
St. Louis, MO 63146
Tel. 314-205-8001
Fax: 314-205-0857
WATS: 800-275-0047
stlouis@brightonbest.com

Tampa, FL
4915 Distribution Dr.
Tampa, FL 33605
Tel. 813-241-8427
Fax: 813-241-6242
WATS: 800-275-0035
tampa@brightonbest.com

Canada

Edmonton, Alberta
12378 184th St.
N.W. Edmonton, Alberta T5V 0A5
Tel: 780-487-9920
Fax: 780-455-2567
WATS: 877-487-9920
edmonton@brightonbest.com

Montreal, Québec
5780 Kieran
Saint-Laurent, Québec H4S 2B5
Tel: 514-336-9888
Fax: 514-336-8865
WATS: 800-361-2076
montreal@brightonbest.com

Toronto, Ontario
7900 Goreway Drive, Unit 1
Brampton, Ontario L6T 5W6
Tel: 905-791-2000
Fax: 905-791-6841
WATS: 800-268-6918
toronto@brightonbest.com

Vancouver, British Columbia
9489 200 St. Unit 103&104
Langley, B.C. V1M 3A7
Tel: 604-513-0311
Fax: 604-513-0312
WATS: 800-663-9106
vancouver@brightonbest.com



All products are manufactured to meet existing ANSI, ASTM, SAE, and DIN Standards. BBI products and services offered exclusively through distribution