

Product Guide/ Line Card

Products to Improve, Repair, Protect and Beautify Concrete



Quality • Innovation • Service



QUALITY - INNOVATION - SERVICE

Since 1957, ChemMasters has earned a reputation for bringing quality, innovative products, coupled with exceptional service to construction professionals within the transportation infrastructure, commercial, decorative and residential concrete industry.

ChemMasters products are widely available throughout the United States, Canada and international construction markets. Always family owned and produced entirely within the US, ChemMasters is both large enough to meet your technical needs and small enough to exceed your relationship expectations. The owners, management and employees of ChemMasters look forward to serving you today and for many years to come.

The ChemMasters Product Guide / Line Card is a helpful resource to understand our extensive product range which includes:

- Concrete curing compounds including cure & protects and highway cures
- Water repellent concrete sealers including reactive penetrating silanes and siloxanes
- Decorative concrete products
- Unique 1 Step curing compounds that include a reactive penetrating silane sealer for long-term protection
- Densifiers and hardeners for commercial warehouses, retail spaces and polished decorative concrete
- Cementitious and polymer repair mortars and grouts, self-levelers, primers and bonding agents
- A wide range of pigmented coating chemistries for bridges, walls, concrete swimming pools and building exteriors
- Form release agents

SPRAY-CURE SPECIALTY CONSTRUCTION PRODUCTS

The Spray Cure Company is established as a division of The Murphy Phoenix Company (now JTM Products) to produce highway cures.

THE SPRAY-CURE COMPANY

The Spray Cure Company makes several crucial additions by acquiring ChemMasters, known for its production of cementitious repair mortars and grouts, and the Bettstone Company, a manufacturer of high-performance bridge and wall coatings. A paint production department is added to the existing plant, and a new batch plant is constructed on the Madison campus. The company is rebranded as ChemMasters to better reflect the comprehensive portfolio of available products.

Gateway Paint & Chemical Company

ChemMasters acquires Gateway Paint, adding extensive specialty coating capabilities. Introduction of ChemMasters top selling Polyseal EZ user friendly low-VOC cure & seal.

1957



The Spray Cure Company builds a state-of-the-art plant in Madison, Ohio.

1960's

1990's

ChemMasters products are specified for restoration of the Pentagon following the September 11th attack. A new coatings laboratory and training center is built on the Madison campus. ChemMasters introduces patented Silencure one step products and low-VOC cure & seals.

2000's

2010's



ChemMasters acquires Vexcon Chemicals and their well-known Certi-Vex, PowerSeal, Penseal, StarSeal and Envio Cure brands.

2020's



WATER-BASED CURING COMPOUNDS

Clear Resin Cures

Safe-Cure® Clear DR

Clear dissipating resin cure.

Specifications: ASTM C309, Type 1 (Type 1D upon request), Class B

EZ Strip Cure™

Clear curing compound which can be easily removed prior to application of subsequent floor coatings and treatments

Specifications: ASTM C309, Type 1 (Type 1D upon request), Class A & B

EZ Strip Cure™ DR

Clear dissipating resin cure for interior & exterior applications. Requires no UV exposure. Easily removed with light mechanical or hand abrasion, or low pressure water.

Clear Wax Cures - DOT Approved in Many States

Safe-Cure® 1200 Clear

Clear wax emulsion curing compound.

Specifications: ASTM C309, Type 1 (Type 1D upon request), Class A

White Pigmented Resin Cures -

DOT Approved in Many States

Certi-Vex® Envio Cure White 1315

White pigmented Poly Alpha-Methylstyrene (PAMS) resin highway curing compound. Specifications: ASTM C309, Type 2, Class A & B, ASTM C1315, Type II

Safe-Cure® 2000

White pigmented resin highway curing compound.

Specifications: ASTM C309, Type 2, Class B; FAA; CRD C300 version available upon request

Certi-Vex® Envio Cure White 500 MTO

White pigmented resin highway curing compound.

Specifications: ASTM C309, Type 2; MTO approved in Ontario, CA

White Pigmented Wax Cures -

DOT Approved in Many States

Safe-Cure® 1200 HS

White pigmented wax emulsion highway curing compound.

Specifications: ASTM C309, Type 2, Class A; DOT approved in many states; CRD C300 version available upon request; high solids

Safe-Cure® 1200

White pigmented wax emulsion highway curing compound.

Specifications: ASTM C309, Type 2, Class A; DOT approved in many states; CRD C300 version available upon request

Safe-Cure® 1000V

White pigmented wax emulsion highway curing compound.

Specifications: ASTM C309, Type 2, Class A; DOT approved in the state of Virginia

Safe-Cure® 1000

White pigmented wax emulsion highway curing compound.

Specifications: ASTM C309, Type 2, Class A; DOT approved in many states; CRD C300 version available upon request

Safe-Cure® 800

White pigmented wax emulsion highway curing compound.

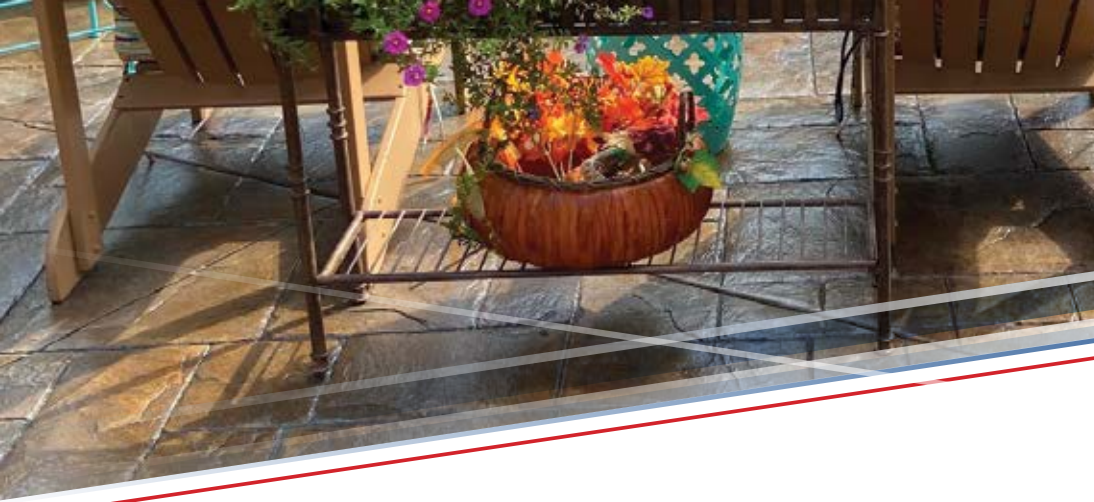
Specifications: ASTM C309, Type 2, Class A; DOT approved in many states

1 Step White Pigmented Wax Cure & Penetrating Silane - DOT Approved in Many States

Silencure™ DOT

White pigmented wax emulsion highway curing compound with penetrating silane.

Specifications: ASTM C309, Type 2, Class A; NCHRP 244, Series II and Series IV; ASTM C672



FILM FORMING CURE & PROTECTS

| Water-Based Cure & Protects

Silencure™ SRT

High performance, non-yellowing, acrylic co-polymer cure & protect containing penetrating silane for long-term protection from freeze/thaw cycles and de-icing chemicals. Suitable for use on new and existing broom finished or hard steel troweled concrete. *Specifications: ASTM C309, Type 1 (Type 1D upon request), Class A & B; NCHRP 244, Series II & Series IV*

Safe-Cure® & Seal EPX

Two-component epoxy cure & protect and primer. Available in clear or pigmented formulations. *Specifications: ASTM C309, Type 1 or 2 (pigmented), Class A & B; NCHRP 244 Series II & IV; ASTM C1315, Type I or II (pigmented), Class B; USDA when cured*

Polyseal™ WB

25% solids, non-yellowing, high performance acrylic co-polymer that cures and protects new and existing concrete. Joint stabilizing sealer for interlocking pavers and stones to prevent joint sand erosion. Less than 100 g/L VOC's. *Specifications: ASTM C309, Type 1, (Type 1D or 2 upon request), Class A & B; ASTM C1315, Type I, (Type 1D or II upon request), Class A; VOC Compliant in SCAQMD; USDA when cured*

Polyseal™ WB 15

15% solids, high performance, non-yellowing, acrylic co-polymer cure & protect for new and existing concrete. *Specifications: ASTM C309, Type 1 (Type 1D upon request), Class A & B; USDA when cured*

Safe-Cure® & Seal 309

15% solids, styrene modified acrylic cure & protect for new and existing broom finish concrete. Primer for pigmented coatings. *Specifications: ASTM C309, Type 1 (Type 1D upon request), Class A & B; USDA when cured*

| Low-VOC Solvent-Based Cure & Protects

Crystal Clear A

25% solids, low-VOC (<350 g/L), super high gloss, high solids, non-yellowing, siliconized acrylic cure & protect for new and existing decorative and broom finish concrete. *Specifications: ASTM C309, Type 1 (Type 1D upon request), Class A & B; ASTM C1315, Type I, Class A; USDA when cured*

Certi-Vex® AC1315 SuperSeal HG

30% solids, low-VOC (<350 g/L), super high gloss, high solids, non-yellowing, acrylic co-polymer cure & protect for new and existing broom finish and decorative concrete. *Specifications: ASTM C309, Type 1 (Type 1D upon request), Class A & B; ASTM C1315, Type I, Class A; USDA when cured*

Certi-Vex® AC1315 SuperSeal Satin

25% solids, low-VOC (<350 g/L), matte/flat finish, non-yellowing, acrylic co-polymer cure & protect for new and existing decorative concrete. *Specifications: ASTM C309, Type 1 (Type 1D upon request), Class A & B; ASTM C1315, Type I, Class A; USDA when cured*

Polyseal™ EZ / Polyseal™ EZ Honey Brown

Low-VOC (<350 g/L), bubble resistant, high gloss, non-yellowing, high performance acrylic co-polymer cure & protect for new and existing broom finish and decorative concrete. *Specifications: ASTM C309, Type 1 (Type 1D upon request), Class A & B; USDA when cured*

Certi-Vex® AC1315 SuperSeal

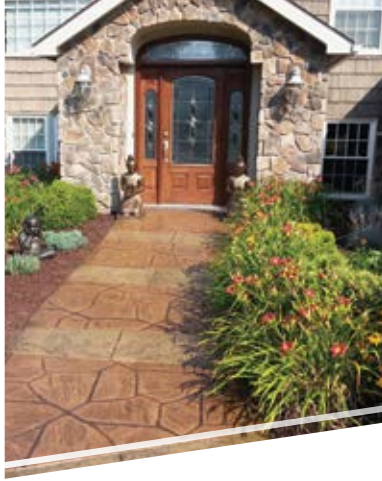
25% solids, low-VOC (<350 g/L), high gloss, non-yellowing, acrylic co-polymer cure & protect for new and existing broom finish and decorative concrete. *Specifications: ASTM C309, Type 1 (Type 1D upon request), Class A & B; ASTM C1315, Type I, Class A; USDA when cured*

Spray-Cure™ & Seal 25 A

25% solids, low-VOC (<350 g/L), non-yellowing, acrylic cure & protect for new and existing broom finish concrete. *Specifications: ASTM C309, Type 1 (Type 1D upon request), Class A & B; ASTM C1315, Type I, Class A; USDA when cured*

Polyseal™ 309-A

15% solids, low-VOC (<350 g/L), non-yellowing, acrylic co-polymer cure & protect for new and existing decorative and broom finish concrete. *Specifications: ASTM C309, Type 1, Class A & B*



| Solvent-Based Cure & Protects

Crystal Clear

25% solids, super high gloss, high solids, non-yellowing, siliconized acrylic cure & protect for new and existing decorative and broom finish concrete. *Specifications: ASTM C309, Type 1 (Type 1D upon request), Class A & B; ASTM C1315, Type I, Class A; USDA when cured*

Certi-Vex® AC1315 HG

30% solids, super high gloss, high solids, non-yellowing, acrylic co-polymer cure & protect for new and existing decorative concrete. *Specifications: ASTM C309, Type 1 (Type 1D upon request), Class A & B; ASTM C1315, Type I, Class A; USDA when cured*

Certi-Vex® AC1315 Satin

25% solids, matte/flat finish, non-yellowing, acrylic co-polymer cure & protect for new and existing broom finish and decorative concrete. *Specifications: ASTM C309, Type 1 (Type 1D upon request), Class A & B; ASTM C1315, Type I, Class A; USDA when cured*

Polyseal™

25% solids, high gloss, non-yellowing, high performance acrylic co-polymer cure & protect for new and existing broom finish and decorative concrete. *Specifications: ASTM C309, Type 1 (Type 1D upon request), Class A & B; ASTM C1315, Type I, Class A; USDA when cured*

Certi-Vex® AC1315

25% solids, high gloss, non-yellowing, acrylic co-polymer cure & protect for new and existing broom finish and decorative concrete. *Specifications: ASTM C309, Type 1 (Type 1D upon request), Class A & B; ASTM C1315, Type I, Class A; USDA when cured*

Spray-Cure™ & Seal 25

25% solids, non-yellowing, acrylic cure & protect for new and existing broom finish concrete. *Specifications: ASTM C309, Type 1 (Type 1D upon request), Class A & B; ASTM C1315, Type I, Class A; USDA when cured*

| Decorative Liquid Release

Liquid Stamp Release

Clear, bubblegum scented liquid treatment that promotes clean release of texturing mats and stamps used to create stamped concrete finishes. Evaporates fully leaving no film or residue.

| Water-Based Protectant

Paver Enhancer™

Penetrating water-based treatment for many types of architectural pavers to deepen and enhance color development. Minimizes formation of efflorescence and maximizes breathability in a matte finish that resists staining.

| Low-VOC Solvent-Based Protectants

Traz 25™ A

25% solids, low-VOC (<400 g/L), high gloss, non-yellowing, pure methyl methacrylate cure & protect with improved chemical resistance for decorative concrete, exposed aggregate, pavers and terrazzo.

Stamped & Decorative Concrete Sealer 400A

Super high gloss, anti-bubbling, slow evaporating cure & protect for stamped and decorative concrete. 200% to 300% more working time than traditional low-VOC formulations.

| Solvent-Based Protectants

Traz 25™

25% solids, high gloss, non-yellowing, pure methyl methacrylate cure & protect with improved chemical resistance for decorative concrete, exposed aggregate, pavers and terrazzo.

| Tints & Anti-Slip Additives

Polyseal™ Tint

Concentrated opaque pigment for solvent-based acrylic cure & protects.

Polyseal™ WB Tint

Concentrated opaque pigment for water-based acrylic cure & protects.

Translucent Tint

Translucent pigment for solvent-based cure & protects.

Slip Stop™

Slip resistant micronized bead additive for use with film forming cure & protects and coatings.



REACTIVE PENETRATING WATER REPELLANT SEALERS

| Water-Based Silanes & Siloxanes

PowerSeal® 40

40% solids, penetrating, water-repellent, chemically reactive water-based silane sealer for DOT and commercial concrete. Low-VOC (<100 g/L). *Specifications: NCHRP 244, Series II & Series IV; ASTM C672*

PowerSeal® 20

20% solids, penetrating, water-repellent, chemically reactive water-based silane sealer for commercial & residential concrete. Low-VOC (<100 g/L).

PowerSeal® SS Plus

8% solids, penetrating, water-repellent, chemically reactive water-based silane modified siloxane sealer for commercial & residential concrete and masonry. Low-VOC (<100 g/L).

| Low-VOC Solvent-Based Silanes

Certi-Vex® Penseal 244 O/W AIM

40% solids, low-VOC (<250 g/L), penetrating, water, oil and stain repellent, chemically reactive silane sealer for commercial and residential concrete. *Specifications: NCHRP 244, Series II & Series IV; ASTM C672*

Aquanil™ Plus 100

100% solids, low-VOC (<250 g/L), penetrating, water-repellent, fast drying, chemically reactive silane sealer for DOT, commercial and residential concrete. *Specifications: NCHRP 244, Series II & Series IV; ASTM C672*

Certi-Vex® Penseal 244 100%

100% solids, low-VOC (<250 g/L), penetrating, water-repellent, chemically reactive silane sealer for DOT, commercial and residential concrete. *Specifications: NCHRP 244, Series II & Series IV; ASTM C672*

Aquanil™ Plus 40-A

40% solids, low-VOC (<250 g/L), penetrating, water-repellent, fast drying, chemically reactive silane sealer for DOT, commercial and residential concrete. *Specifications: NCHRP 244, Series II & Series IV; ASTM C672*

Certi-Vex® Penseal 244 40% AIM

40% solids, low-VOC (<250 g/L), penetrating, water-repellent, chemically reactive silane sealer for DOT, commercial and residential concrete. *Specifications: NCHRP 244, Series II & Series IV; ASTM C672*

| Solvent-Based Silanes

Aquanil™ Plus 100

100% solids, penetrating, water-repellent, fast drying, chemically reactive silane sealer for DOT, commercial and residential concrete. *Specifications: NCHRP 244, Series II & Series IV; ASTM C672*

Certi-Vex® Penseal 244 100%

100% solids, low-VOC (<250 g/L), penetrating, water-repellent, chemically reactive silane sealer for DOT, commercial and residential concrete. *Specifications: NCHRP 244, Series II & Series IV; ASTM C672*

Aquanil™ Plus 40

40% solids, penetrating, water-repellent, fast drying, chemically reactive silane sealer for DOT, commercial and residential concrete. *Specifications: NCHRP 244, Series II & Series IV; ASTM C672*

| Boiled Linseed Oil

Anti-Spall 55

55% solids, boiled linseed oil anti-spalling compound for DOT and commercial concrete. *Specifications: ASTM D235; ASTM D260; AASHTO M126 & M128; Fed. Spec. TTL 190C & TTT 291C*





COATINGS

| Bridge Coatings

Duraguard™ 310CRU

Two-component, chemical resistant, aliphatic urethane. Standard and custom pigments available. Use Safe-Cure & Seal EPX as primer as part of DOT listed epoxy/urethane coating system. Standard and custom pigments available. *Specifications: ACI 302.89, Table 1.1; USDA when cured*

GreenThane™ 310WB

Two-component, water-based, chemical resistant, aliphatic urethane. Standard and custom pigments available. Use Safe-Cure & Seal EXP as primer as part of DOT listed epoxy/urethane coating system. Standard and custom pigments available. Low-VOC (<100 g/L). *Specifications: ACI 302.89, Table 1.1; USDA when cured*

Safe-Cure® & Seal EPX

Two-component epoxy cure & protect and primer. Available in clear or pigmented formulations. *Specifications: ASTM C309, Type 1 or 2 (pigmented), Class A & B; NCHRP 244 Series II & IV; ASTM C1315, Type I or II (pigmented), Class B; USDA when cured*

ColorCoat™ XL

100% siliconized acrylic stain specifically formulated to have superior water shedding characteristics for exterior substrates. Standard and custom pigments available. *Federal Specifications: TTC-555B & TTP 141D*

ColorCoat™

100% acrylic coating for concrete and masonry. Standard and custom pigments available. *Federal Specifications: TTC-555B & TTP 141D*

| Wall Coatings

ColorCoat™ XL

100% siliconized acrylic stain specifically formulated to have superior water shedding characteristics for exterior substrates. Standard and custom pigments available. *Federal Specifications: TTC-555B & TTP 141D*

ColorLastic™

100% elastomeric acrylic coating formulated to bridge hairline cracks, withstand substrate movement and accommodate rapid changes in temperature. Standard and custom pigments available. *Federal Specifications: TTC-555B & TTP 141D*

ColorCoat™

100% acrylic coating for concrete and masonry. Standard and custom pigments available. *Federal Specifications: TTC-555B & TTP 141D*

TextureDOT™

100% acrylic, textured coating for concrete and masonry. Standard and custom pigments available. *Specifications: ASTM C309; USDA when cured*

TextureDOT™ - Smooth

100% acrylic, smooth coating for concrete and masonry. Standard and custom pigments available. *Specifications: ASTM C309; USDA when cured*

| Anti-Graffiti Coatings

Graffiti Stopper™

Two-component, non-sacrificial urethane that repels most paints and inks used by taggers to create graffiti.

Graffiti Stopper™ 1K

Single component, non-sacrificial urethane that repels most paints and inks used by taggers to create graffiti.

Graffiti Seal™

Single component, water-based sacrificial anti-graffiti coating.

Graffiti Eraser™

Removes graffiti from concrete, masonry, brick, block, tile, natural stone or coated surfaces.

| Pool Coatings

ChemMasters® Rubber Swimming Pool Paint

Excellent protective and decorative coating for use on concrete and plaster swimming pools that are bare or have been previously painted with acrylic, rubber or chlorinated rubber based paint. Available in brilliant white, light blue, blue and lane marking black.

| Waterproof Coatings

Dry Block™

Water-based emulsion waterproof coating for interior and exterior vertical surfaces, suitable for both above and below grade applications. Forms a durable waterproof coating when applied to concrete, block, masonry, stucco and brick.



1 STEP CURES & PENETRATING SILANE SHIELD

| Water-Based

Silencure™ DOT

White pigmented wax emulsion highway curing compound with penetrating silane. For freshly placed highway pavement only. *Specifications: ASTM C309, Type 2, Class A; NCHRP 244, Series II and Series IV; ASTM C672*

Silencure™ SRT

High performance, non-yellowing, acrylic co-polymer cure & protect containing penetrating silane shield for long-term protection from freeze/thaw cycles and de-icing chemicals. Suitable for use on broom finished or hard steel troweled concrete. *Specifications: ASTM C309, Type 1 (Type 1D upon request), Class A & B; NCHRP 244, Series II & Series IV*

| Low-VOC Solvent-Based

Silencure™ A

Low-VOC (<350 g/L), non-yellowing, high performance acrylic co-polymer, cure & protect containing penetrating silane shield for lasting protection from freeze/thaw cycles and deicing chemicals on DOT and commercial broom finish concrete. For freshly placed broom finished concrete only. *Specifications: ASTM C309, Type 1 (Type 1D available upon request), Class A & B; NCHRP 244, Series II & Series IV*

Certi-Vex® Guard Clear AIM

Low-VOC (350 g/L), non-yellowing, high gloss, acrylic co-polymer, cure & protect with penetrating silane shield for decorative, commercial and residential concrete. *Specifications: ASTM C309, Type 1 (Type 1D available upon request), Class A & B, ASTM C1315, Type I, Class A*

| Solvent-Based

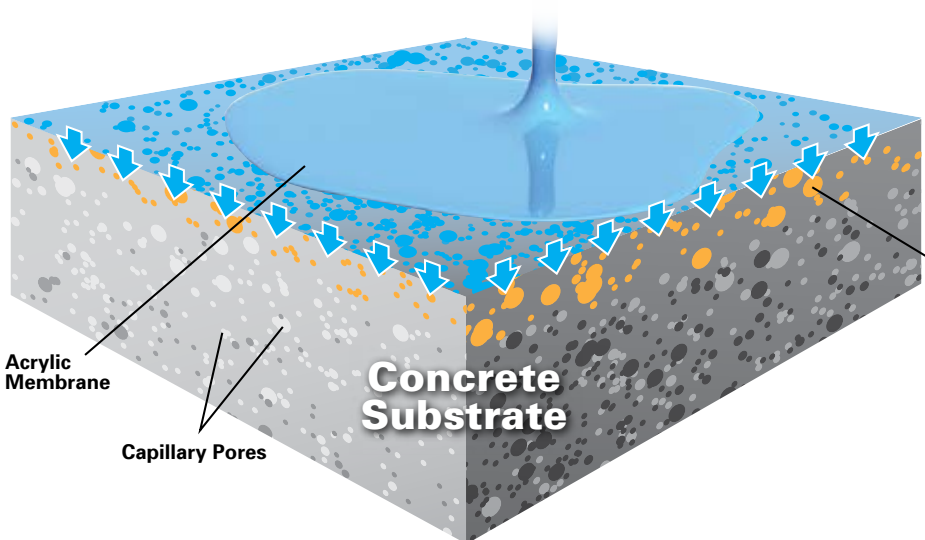
Silencure™

Non-yellowing, high performance acrylic co-polymer, cure & protect containing penetrating silane shield for lasting protection from freeze/thaw cycles and deicing chemicals on DOT and commercial broom finish concrete. For freshly placed broom finished concrete only. *Specifications: ASTM C309, Type 1 (Type 1D available upon request), Class A & B; NCHRP 244, Series II & Series IV*

Certi-Vex® Guard Clear

Non-yellowing, high gloss, acrylic co-polymer, cure & protect with penetrating silane shield for decorative, commercial and residential concrete. *Specifications: ASTM C309, Type 1 (Type 1D available upon request), Class A & B, ASTM C1315, Type I, Class A*

The Single Day Answer for Fully-Protected Concrete



ChemMasters 1 Step Cure & Seals contain an integral silane sealer that penetrates deeply into concrete pores and capillaries where it reacts to form a water repellent silicene for long-term protection against damage caused by freeze/thaw cycles and deicing chemicals. Cure your concrete and add a **Silane Shield** for enhanced durability, all in one application.

Acrylic membrane prevents evaporation of water and silane from freshly-placed concrete. Cures concrete to ASTM C 309 Specifications.

Upon application, silane molecules are drawn to, penetrate and coat capillary pore walls where they react with free lime to form a silicene lining.

U.S. Patent 7402623





FLOOR HARDENERS & DENSIFIERS

Liquid Floor Hardeners & Densifiers

ChemGuard™

Penetrating, reactive, stain resistant polished concrete guard surface treatment.

Chemisil™ Plus OR

Chemically reactive, oil resistant treatment for densified concrete. *Specifications: USDA when cured*

StarSeal® Fusion

Chemically reactive silicate crack and hole repair.

Chemisil™ Plus Li

Chemically reactive solution of lithium-silicate to harden, densify and increase the service life of concrete. Resists white salt adhesion. *Specifications: ASTM C672; ASTM C642; ASTM E96; Fed. Spec. SSW 110C; USDA when cured*

StarSeal® PS Clear

Chemically reactive solution of potassium-silicate to harden, densify and increase the service life of concrete. *Specifications: ASTM C672; ASTM C642; ASTM E96; Fed. Spec. SSW 110C; USDA when cured*

Chemisil™ Plus

Chemically reactive solution of sodium-silicate with added silicate to harden, densify and increase the service life of concrete. *Specifications: ASTM C672; ASTM C642; ASTM E96; Fed. Spec. SSW 110C; USDA when cured*

Chemisil™

Clear, sodium silicate hardener and dustproofer for concrete. *Specifications: USDA when cured*

Dry Shake Floor Hardeners & Densifiers

Concolor™

Non-metallic, quartz aggregate shake-on floor surface hardener. Available in natural or custom pigments.

RETARDERS & ACCELERATORS

Evaporation Retarders

Spray Film™

Water-based monomolecular evaporation retarder for use in hot, windy or low humidity conditions.

Surface Retarders

Exposee™

Surface retarder to create exposed aggregate look.

Set Accelerators

Freezban NC™

Non-Chloride accelerator and densifier for concrete and masonry. *Specifications: ASTM C494, Type E; AASHTO M 194, Type E; CRD C87, Type E*

Freezban™ / Freezban™ Beads

Accelerator for mortar, cement-based plaster and stucco. Available in liquid or bead formulations. *Specifications: ASTM C494, Type C; AASHTO M 194, Type C; CRD C87, Type C*

COATING REPAIR SOLVENTS, LUBRICANTS AND CLEANERS

Coating Repair Solvents

ChemMasters® Coating Repair Solvent

Slow evaporating, high power solvent for tool cleanup and repair of bubbles, whitening, roller and sprayer marks in solvent-based coatings.

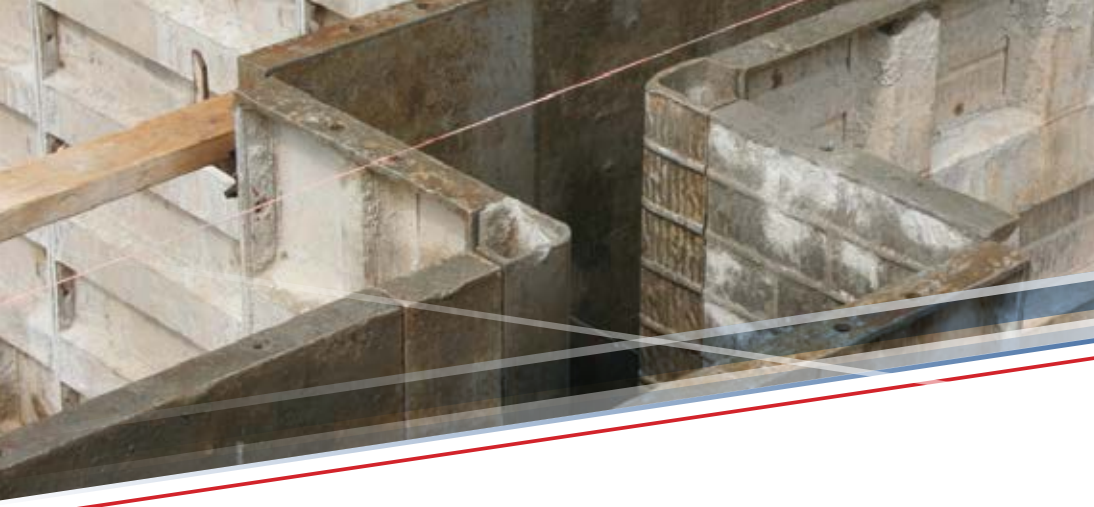
Cleaners

Skid Daddle™

Specialized cleaner to remove rubber tire marks from epoxy or polymer floor coatings and smooth finish concrete without damaging the surface.

Graffiti Eraser™

Removes graffiti from concrete, masonry, brick, block, tile, natural stone or coated surfaces.



GROUTS

| Cementitious Construction Grouts

Conset™ Grout-XT

Non-shrink, high performance construction grade grout with superior flow characteristics at installation temperature X-tremes. *Specifications: ASTM C1107; CRD C 621 92*

Conset™ Grout NY

Non-shrink construction grade grout for NY State DOT projects. *Specifications: ASTM C1107; CRD C 621 92*

Conset™ Grout

Non-shrink construction grade grout. *Specifications: ASTM C1107; CRD C 621 92*

| Specialty Grouts

Met-Ox™ Grout

Non-shrink, non-catalyzed metallic precision grout. *Specifications: ASTM C1107; CRD C 621 92*

Kemset™ Grout

Non-shrink, non-metallic high strength precision grout. *Specifications: ASTM C1107; CRD C 621 92*

Gorilla Grout™

Non-shrink, non-metallic, very high strength precision grout. *Specifications: ASTM C1107; CRD C 621 92*

Polytops™ MMA Grout

Extremely high strength methyl methacrylate grout cures at temperatures below freezing.

Polytops™ GC Grout

High strength, general construction grade, three component epoxy grout.

FORM RELEASE AGENTS

| Premium Hydro-Treated Oil-Based

Release

Oil-based, hydrotreated oil, dual action reactive concrete form release agent.

| Water-Based

Safe Slip™

Water-based, dual action concrete form release agent.

| Decorative Liquid Stamp Release

Liquid Stamp Release

Clear, bubblegum scented liquid treatment that promotes clean release of texturing mats and stamps to create stamped concrete finishes. Leaves no film or residue.

CRACK REPAIR & SEALERS

| High Molecular Weight Methacrylates

Duraguard™ 401-30E

Very low viscosity, solvent-free, high molecular weight methacrylate penetrating sealer and crack healer with enhanced elongation for high flexural applications.

Duraguard™ 401

Very low viscosity, solvent-free, high molecular weight methacrylate penetrating sealer and crack healer.

| Epoxy

Duraguard™ HM Sealer

100% solids, low viscosity, high modulus, moisture insensitive, gravity fed or injection epoxy crack filler and sealer.



CONCRETE RESTORATION PRODUCTS

| Horizontal Repairs

Durapatch™ MMA

Very high strength, chemical resistant methyl methacrylate patching mortar. Cures in low temperatures.

ChemSpeed™ 65

One component, rapid setting, high strength, polymer modified highway or industrial horizontal patching material. Can be extended with up to 50% pea gravel for deep patching. *Specifications: ASTM C928, R3*

ChemSpeed™ 75

One component, rapid setting, high performance mortar with migrating corrosion inhibitor and high early strength for structural repair and form & pour applications. Cures to 20 degrees F.

ChemPatch™ RS

One component, rapid setting multi-functional repair mortar for a wide variety of horizontal, vertical and overhead repairs.

SpeedPatch™ 2.0

One component, fast setting, gypsum free patching compound. Shavable after initial set. Excellent freeze/thaw durability.

FeatherPatch™

One component, fast setting, high strength, polymer modified patching material for horizontal repairs up to 1 inch depth.

ChemMasters® Thin Patch

One component, polymer modified, multipurpose repair mortar designed for thin repairs to horizontal, vertical and overhead concrete.

ChemMix™

Concrete mix and patching product designed to provide all the performance, workability and cosmetics of ready mix concrete.

| Vertical & Overhead Repairs

ChemPatch™ V01

One component, polymer modified, high strength, fast setting, non-shrink repair mortar with fiber and migrating corrosion inhibitor for deep vertical and overhead structural repairs.

SpeedPatch™ 2.0

One component, fast setting, gypsum free patching compound. Shavable after initial set. Excellent freeze/thaw durability.

| Form & Pour/Pump

ChemPatch™ Form & Pour

One component, shrinkage compensated, cementitious fiber reinforced and added migrating corrosion inhibitor for added protection of rebar and structural steel. Excellent flow and pumping characteristics, suitable for large scale form and pour/pump applications.

| Hydraulic Cement/Plug

ChemPlug™ Fast

Fast setting expansive hydraulic cement compounded to withstand continual exposure to water and pressure.

ChemPlug™

Standard setting expansive hydraulic cement compounded to withstand continual exposure to water and pressure.

| Rubbing & Resurfacing

ChemRub™

Rubbing and resurfacing compound for vertical and overhead concrete.

| Bonding Agents

Cretelox™

Acrylic integral bonding additive and performance enhancing modifier for thin concrete and dampproof coatings. *Specifications: ASTM C1059, Type II; ASTM C1438, Type II*

Polyweld™ Bonding Agent & Primer

Bonding agent for concrete and plaster, rewettable one time. Primer for Level Top™ products. *Specifications: ASTM C1059, Type I*

Polyweld™ EXP^{CI}

3 component, solvent free, moisture tolerant, epoxy modified, cementitious bonding specifically formulated as an anti-corrosion coating.

Continued on back.



Concrete Restoration Products *continued.*

| Damp Proofers

Chemseal™

Dampproofing coating for vertical concrete or masonry. Above or below grade, interior or exterior applications. Standard and custom pigments available. *Specifications: USDA when cured*

Cretelox™

Acrylic integral bonding additive and performance enhancing modifier for thin concrete and dampproof coatings. *Specifications: ASTM C1059, Type II; ASTM C1438, Type II*

MasterGard™ 400

Cold applied, water emulsion, semi-mastic dampproofer for concrete or masonry walls. Non-fibrated for brush or spray application. *Specifications: ASTM D1227, Type III, Class 1; ASTM D1187, Type I*

| Anchoring

P.A.C.™ Plus+

Pourable anchoring cement. Fast setting, gypsum-free, high strength, expansive anchoring cement.

SELF-LEVELERS

| Self-Levelers

Level Top™

Self leveling, pumpable, gypsum free underlayment.

Level Top™ Supreme

Self leveling, pumpable, gypsum free overlayment. Polishable.

Level Top™ Supreme White

Self leveling, pumpable, gypsum free white overlayment. Light reflective. Can be polished, dyed and pigmented to create decorative appearances.

Polyweld™ Bonding Agent & Primer

Bonding agent for concrete and plaster, rewettable one time. Primer for Level Top™ products. *Specifications: ASTM C1059, Type I*

Our Knowledge is
**Concrete & Specialty
CoatingsSM**



We manufacture a complete line of specialty products to improve, repair, protect and beautify concrete and masonry. Contractors rely on our experience, knowledge & quality to help ensure success.



Phone: 440-428-2105
Toll-Free: 800-486-7866
Fax: 440-428-7091

300 Edwards St., Madison, OH 44057
www.chemmasters.net
info@chemmasters.net